

Datasheet for ABIN933038
anti-GPC4 antibody (AA 401-529)



[Go to Product page](#)

2 Images

Overview

Quantity:	100 µL
Target:	GPC4
Binding Specificity:	AA 401-529
Reactivity:	Human
Host:	Mouse
Clonality:	Monoclonal
Conjugate:	This GPC4 antibody is un-conjugated
Application:	Western Blotting (WB), ELISA, Immunofluorescence (IF)

Product Details

Immunogen:	GPC4 antibody was raised in mouse using recombinant human GPC4 (401-529aa) purified from E. coli as the immunogen.
Clone:	AT4A3
Isotype:	IgG1 kappa
Purification:	GPC4 antibody was purified by protein-G affinity chromatography

Target Details

Target:	GPC4
Alternative Name:	GPC4 (GPC4 Products)
Pathways:	Glycosaminoglycan Metabolic Process

Application Details

Application Notes: IF: 1:250-1:500, WB: 1:250-1:500

Restrictions: For Research Use only

Handling

Format: Liquid

Concentration: Lot specific

Buffer: as a liquid PBS, pH 7.4, with 0.1 % NaN₃.

Preservative: Sodium azide

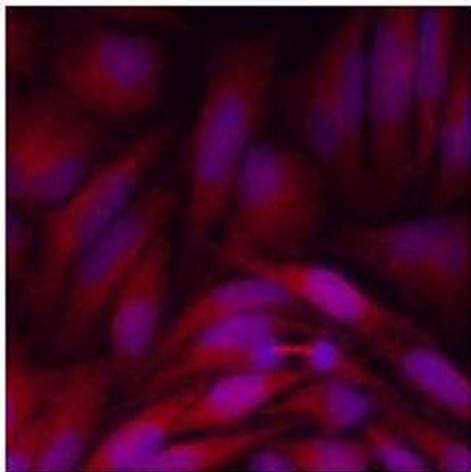
Precaution of Use: This product contains Sodium azide: a POISONOUS AND HAZARDOUS SUBSTANCE which should be handled by trained staff only.

Handling Advice: Avoid repeated freeze/thaw cycles

Storage: -20 °C

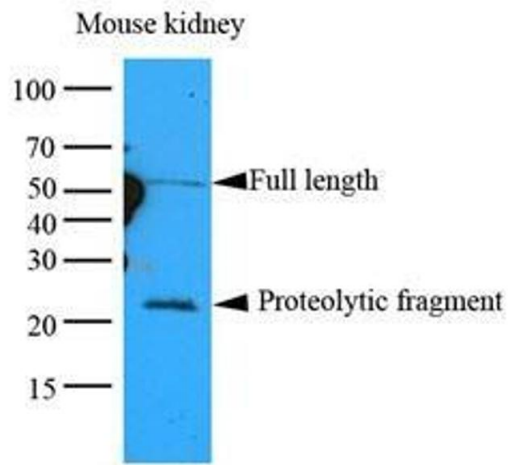
Storage Comment: Store at 4 °C for short term storage. Aliquot and store at -20 °C for long term storage.

Images



Immunofluorescence

Image 1. Immunofluorescencitrocellulosee of human HeLa cells stained with Hoechst 3342 (Blue) for nucleus staining and monoclonal anti-human GPC4 antibody (1:500) with Texas Red (Red).



Western Blotting

Image 2. Cell lysates of Mouse kidney lysates (35 ug) were resolved by SDS-PAGE, transferred to nitrocellulose membrane and probed with anti-human GPC4 (1:1000). Proteins were visualized using a goat anti-mouse secondary antibody conjugated to HRP and an ECL detection system.