

Datasheet for ABIN933045

**anti-Cbl Proto-Oncogene B, E3 Ubiquitin Protein Ligase (CBLB)
antibody**[Go to Product page](#)**1** Image

Overview

Quantity:	100 µg
Target:	Cbl Proto-Oncogene B, E3 Ubiquitin Protein Ligase (CBLB)
Reactivity:	Human
Host:	Mouse
Clonality:	Monoclonal
Conjugate:	Un-conjugated
Application:	Western Blotting (WB), Dot Blot (DB)

Product Details

Immunogen:	CBLB antibody was raised in mouse using recombinant Human Cas-Br-M (Murine) Ecotropic Retroviral Transforming Sequence B
Clone:	246C5a
Isotype:	IgG2a
Cross-Reactivity:	Human, Mouse (Murine)
Cross-Reactivity (Details):	Other species not studied.
Purification:	Protein G affinity chromatography

Target Details

Target:	Cbl Proto-Oncogene B, E3 Ubiquitin Protein Ligase (CBLB)
Alternative Name:	CBLB (CBLB Products)

Target Details

Background: E3 ubiquitin-protein ligase which accepts ubiquitin from specific E2 ubiquitin-conjugating enzymes, and transfers it to substrates, generally promoting their degradation by the proteasome. Negatively regulates TCR (T-cell receptor), BCR (B-cell receptor) and FCER1 (high affinity immunoglobulin epsilon receptor) signal transduction pathways. In naive T-cells, inhibits VAV1 activation upon TCR engagement and imposes a requirement for CD28 costimulation for proliferation and IL-2 production. Also acts by promoting PIK3R1/p85 ubiquitination, which impairs its recruitment to the TCR and subsequent activation. In activated T-cells, inhibits PLCG1 activation and calcium mobilization upon restimulation and promotes energy.

Synonyms: Monoclonal CBLB antibody, Anti-CBLB antibody, Cas-Br-M (murine) ecotropic retroviral transforming sequence b antibody, RNF56 antibody, Nbla00127 antibody.

Application Details

Application Notes: WB: 0.2-2 µg/mL
Optimal conditions should be determined by the investigator.

Restrictions: For Research Use only

Handling

Concentration: Lot specific

Buffer: CBLB antibody in PBS (3.0 mM KCl, 1.5 mM KH₂ PO₄, 140 mM NaCl, 8.0 mM Na₂ HPO₄ (pH 7.4)) containing 1 % bovine serum albumin (BSA) and 0.05 % sodium azide (NaN₃).

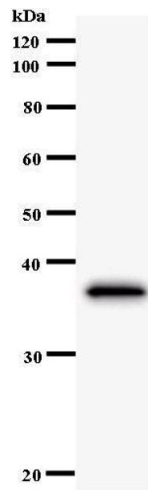
Preservative: Sodium azide

Precaution of Use: This product contains Sodium Azide: a POISONOUS AND HAZARDOUS SUBSTANCE, which should be handled by trained staff only.

Handling Advice: Avoid repeated freeze/thaw cycles.
Dilute only prior to immediate use.

Storage: 4 °C/-20 °C

Storage Comment: Store at 2-8 °C for up to one year. We recommend long term storage at -20 °C.



Western Blotting

Image 1.