

Datasheet for ABIN933056
anti-EPHX1 antibody (AA 21-455)



[Go to Product page](#)

1 Image

Overview

| | |
|----------------------|--------------------------------------|
| Quantity: | 100 µL |
| Target: | EPHX1 |
| Binding Specificity: | AA 21-455 |
| Reactivity: | Human |
| Host: | Mouse |
| Clonality: | Monoclonal |
| Conjugate: | This EPHX1 antibody is un-conjugated |
| Application: | Western Blotting (WB), ELISA |

Product Details

| | |
|---------------|---|
| Immunogen: | EPHX1 antibody was raised in mouse using recombinant human EPHX1 (21-455aa) purified from E. coli as the immunogen. |
| Clone: | AT2E5 |
| Isotype: | IgG2a kappa |
| Purification: | EPHX1 antibody was purified by protein-G affinity chromatography |

Target Details

| | |
|-------------------|--|
| Target: | EPHX1 |
| Alternative Name: | EPHX1 (EPHX1 Products) |

Application Details

Application Notes: WB: 1:1,000-1:2,000

Restrictions: For Research Use only

Handling

Format: Liquid

Concentration: Lot specific

Buffer: as a liquid PBS, pH 7.4, with 0.1 % NaN₃.

Preservative: Sodium azide

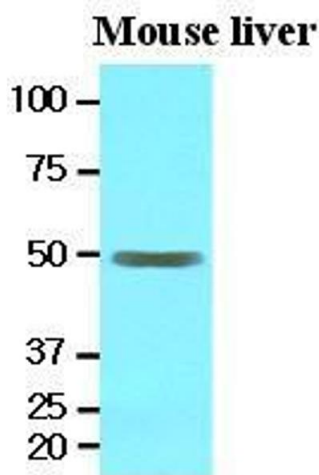
Precaution of Use: This product contains Sodium azide: a POISONOUS AND HAZARDOUS SUBSTANCE which should be handled by trained staff only.

Handling Advice: Avoid repeated freeze/thaw cycles

Storage: -20 °C

Storage Comment: Store at 4 °C for short term storage. Aliquot and store at -20 °C for long term storage.

Images



Western Blotting

Image 1. The extracts of mouse liver (30 ug) were resolved by SDS-PAGE, transferred to nitrocellulose membrane and probed with anti-human EPHX1 (1:1000). Proteins were visualized using a goat anti-mouse secondary antibody conjugated to HRP and an ECL detection system.