

Datasheet for ABIN933059

anti-CBR1 antibody (AA 1-277)**1** Image[Go to Product page](#)

Overview

| | |
|----------------------|------------------------------|
| Quantity: | 100 µL |
| Target: | CBR1 |
| Binding Specificity: | AA 1-277 |
| Reactivity: | Human |
| Host: | Mouse |
| Clonality: | Monoclonal |
| Application: | Western Blotting (WB), ELISA |

Product Details

| | |
|---------------|--------------------------------------------------------------------------------------------------|
| Immunogen: | CBR1 antibody was raised in mouse using recombinant human CBR1 (1-277 aa) purified from E. coli |
| Clone: | AT4E12 |
| Isotype: | IgG2a kappa |
| Purification: | CBR1 antibody was purified by Protein G affinity chromatography |

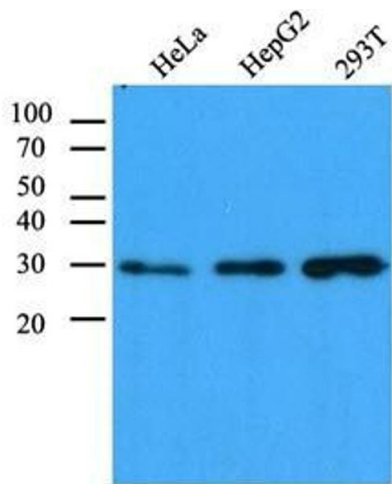
Target Details

| | |
|-------------------|----------------------------------------|
| Target: | CBR1 |
| Alternative Name: | CBR1 (CBR1 Products) |

Application Details

| | |
|--------------------|------------------------------------------------------------------------------------------------------------------------|
| Application Notes: | WB: 1:500-1:1,000 |
| Restrictions: | For Research Use only |
| Handling | |
| Format: | Liquid |
| Concentration: | Lot specific |
| Buffer: | Supplied as a liquid In PBS, pH 7.4, with 0.1 % NaN3. |
| Preservative: | Sodium azide |
| Precaution of Use: | This product contains Sodium azide: a POISONOUS AND HAZARDOUS SUBSTANCE which should be handled by trained staff only. |
| Handling Advice: | Avoid repeated freeze/thaw cycles |
| Storage: | -20 °C |
| Storage Comment: | Store at 4 °C for short term storage. Aliquot and store at -20 °C for long term storage. |

Images



Western Blotting

Image 1. The cell lysates (40 ug) were resolved by SDS-PAGE, transferred to PVDF membrane and probed with anti-human CBR1 antibody (1:1,000). Proteins were visualized using a goat anti-mouse secondary antibody conjugated to HRP and an ECL detection system.