

Datasheet for ABIN933064
anti-PPM1A antibody (AA 1-382)



[Go to Product page](#)

1 Image

Overview

Quantity:	100 µL
Target:	PPM1A
Binding Specificity:	AA 1-382
Reactivity:	Human
Host:	Mouse
Clonality:	Monoclonal
Conjugate:	This PPM1A antibody is un-conjugated
Application:	Western Blotting (WB), ELISA, Immunoprecipitation (IP)

Product Details

Immunogen:	PP2Calpha antibody was raised in mouse using recombinant human PP2Calpha (1-382aa) purified from E. coli as the immunogen.
Clone:	P6c7
Isotype:	IgG2b kappa
Purification:	PP2Calpha antibody was purified by protein-G affinity chromatography

Target Details

Target:	PPM1A
Alternative Name:	PP2Calpha (PPM1A Products)

Application Details

Application Notes: WB: 1:4000, IHC: 1:50, FC: 1:100

Restrictions: For Research Use only

Handling

Format: Liquid

Concentration: Lot specific

Buffer: as a liquid PBS, pH 7.4, with 0.1 % NaN₃.

Preservative: Sodium azide

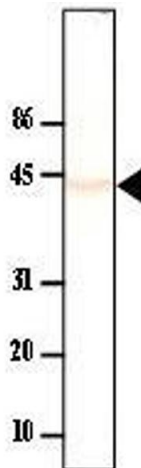
Precaution of Use: This product contains Sodium azide: a POISONOUS AND HAZARDOUS SUBSTANCE which should be handled by trained staff only.

Handling Advice: Avoid repeated freeze/thaw cycles

Storage: -20 °C

Storage Comment: Store at 4 °C for short term storage. Aliquot and store at -20 °C for long term storage.

Images



Western Blotting

Image 1. Mouse liver cytosol extract was resolved by electrophoresis, transferred to PVDF membrane and probed with anti-PP2C α (1:250). Proteins were visualized using a goat anti-mouse secondary antibody conjugated to HRP and a DAP detection system. Arrow indicates PP2C α