

Datasheet for ABIN933071

anti-EPH Receptor A2 antibody (AA 559-976)[Go to Product page](#)**2** Images

Overview

Quantity:	100 µL
Target:	EPH Receptor A2 (EPHA2)
Binding Specificity:	AA 559-976
Reactivity:	Human
Host:	Mouse
Clonality:	Monoclonal
Conjugate:	This EPH Receptor A2 antibody is un-conjugated
Application:	Western Blotting (WB), ELISA, Immunohistochemistry (IHC)

Product Details

Immunogen:	EphA2 antibody was raised in mouse using recombinant human EphA2 (559-976aa) purified from E. coli as the immunogen.
Clone:	3D7
Isotype:	IgG2b kappa
Purification:	EphA2 antibody was purified by protein-G affinity chromatography

Target Details

Target:	EPH Receptor A2 (EPHA2)
Alternative Name:	EphA2 (EPHA2 Products)
Pathways:	RTK Signaling

Application Details

Application Notes: IHC: 1:100-1:200, WB: 1:500-1:2,000

Restrictions: For Research Use only

Handling

Format: Liquid

Concentration: Lot specific

Buffer: as a liquid PBS, pH 7.4, with 0.1 % NaN₃.

Preservative: Sodium azide

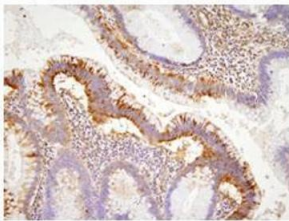
Precaution of Use: This product contains Sodium azide: a POISONOUS AND HAZARDOUS SUBSTANCE which should be handled by trained staff only.

Handling Advice: Avoid repeated freeze/thaw cycles

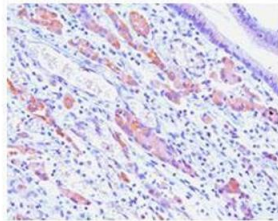
Storage: -20 °C

Storage Comment: Store at 4 °C for short term storage. Aliquot and store at -20 °C for long term storage.

Images



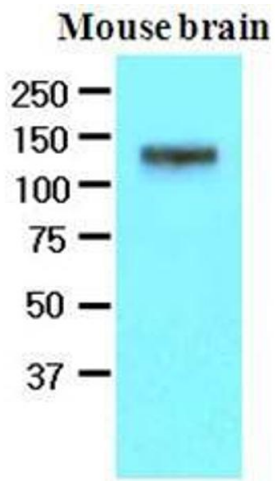
Human colon cancer



Human gastric cancer

Immunohistochemistry

Image 1. Paraffin embedded sections of human colon and gastric cancer tissue were incubated with anti-human EphA2 (1:100) for 2 hours at room temperature. Antigen retrieval was performed in 0.1M sodium citrate buffer and detected using Diaminobenzidine (DAB)



Western Blotting

Image 2. The extracts of mouse brain (50 ug) were resolved by SDS-PAGE, transferred to nitrocellulose membrane and probed with anti-human EphA2 (1:500). Proteins were visualized using a goat anti-mouse secondary antibody conjugated to HRP and an ECL detection system.