

Datasheet for ABIN933078
anti-CRABP1 antibody (AA 1-137)



[Go to Product page](#)

1 Image

Overview

Quantity:	100 µL
Target:	CRABP1
Binding Specificity:	AA 1-137
Reactivity:	Human
Host:	Mouse
Clonality:	Monoclonal
Conjugate:	This CRABP1 antibody is un-conjugated
Application:	ELISA, Western Blotting (WB)

Product Details

Immunogen:	CRABP1 antibody was raised in mouse using recombinant human CRABP1 (1-137aa) purified from E. coli as the immunogen.
Clone:	AT1A1
Isotype:	IgG2b kappa
Purification:	CRABP1 antibody was purified by protein-G affinity chromatography

Target Details

Target:	CRABP1
Alternative Name:	CRABP1 (CRABP1 Products)

Application Details

Application Notes: WB: 1:500-1:100, IF: 1:100-1:500, ELISA: 1:5000

Restrictions: For Research Use only

Handling

Format: Liquid

Concentration: Lot specific

Buffer: as a liquid PBS, pH 7.4, with 0.1 % NaN₃.

Preservative: Sodium azide

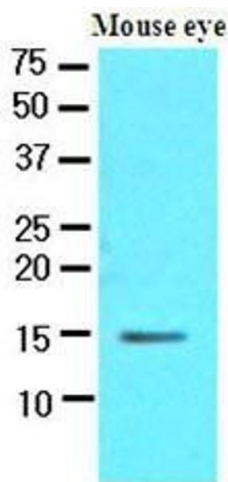
Precaution of Use: This product contains Sodium azide: a POISONOUS AND HAZARDOUS SUBSTANCE which should be handled by trained staff only.

Handling Advice: Avoid repeated freeze/thaw cycles

Storage: -20 °C

Storage Comment: Store at 4 °C for short term storage. Aliquot and store at -20 °C for long term storage.

Images



Western Blotting

Image 1. The extracts of mouse eye (30 ug) were resolved by SDS-PAGE, transferred to nitrocellulose membrane and probed with anti-human CRABP1 (1:500). Proteins were visualized using a goat anti-mouse secondary antibody conjugated to HRP and an ECL detection system.