

Datasheet for ABIN933089
anti-BTAF1 antibody

3 Images



[Go to Product page](#)

Overview

Quantity:	100 µg
Target:	BTAF1
Reactivity:	Human
Host:	Mouse
Clonality:	Monoclonal
Conjugate:	This BTAF1 antibody is un-conjugated
Application:	Immunoprecipitation (IP), Western Blotting (WB), Flow Cytometry (FACS), Immunocytochemistry (ICC), Dot Blot (DB)

Product Details

Immunogen:	BTAF1 antibody was raised in mouse using recombinant Btaf1 Rna Polymerase Ii, B-Tfiid Transcription Factor-Associated, 170 Kda (Mot1 Homolog, S. Cerevisiae) (Btaf1)
Clone:	BTA3D61
Isotype:	IgG1
Cross-Reactivity:	Human, Mouse (Murine), Rat (Rattus)
Cross-Reactivity (Details):	Other species not studied.
Purification:	Protein G affinity chromatography

Target Details

Target:	BTAF1
---------	-------

Target Details

Alternative Name: BTAF1 ([BTAF1 Products](#))

Background: Initiation of transcription by RNA polymerase II requires the assistance of TATA box-binding protein (TBP, MIM 600075) and TBP-associated factors, or TAFs (e.g., TAF2B, MIM 604912), in 2 distinct complexes, TFIID and B-TFIID. The TFIID complex is composed of TBP and more than 8 TAFs. However, the majority of TBP is present in the B-TFIID complex, which is composed of TBP and TAFII170, also called TAF172, and has DNA-dependent ATPase activity. Synonyms: Monoclonal BTAF1 antibody, Anti-BTAF1 antibody, B-TFIID transcription factor-associated, MOT1 antibody, TAF172 antibody, KIAA0940 antibody, TAFII170 antibody, TAF(II)170 antibody.

Application Details

Application Notes: WB: 0.2-2 µg/mL, IP: 100-500 µg/sample, FC: 0.5-2 µg/sample, ICC: 2-100 µg/mL
Optimal conditions should be determined by the investigator.

Restrictions: For Research Use only

Handling

Concentration: Lot specific

Buffer: BTAF1 antibody in PBS (3.0 mM KCl, 1.5 mM KH₂ PO₄, 140 mM NaCl, 8.0 mM Na₂ HPO₄ (pH 7.4)) containing 1 % bovine serum albumin (BSA) and 0.05 % sodium azide (NaN₃).

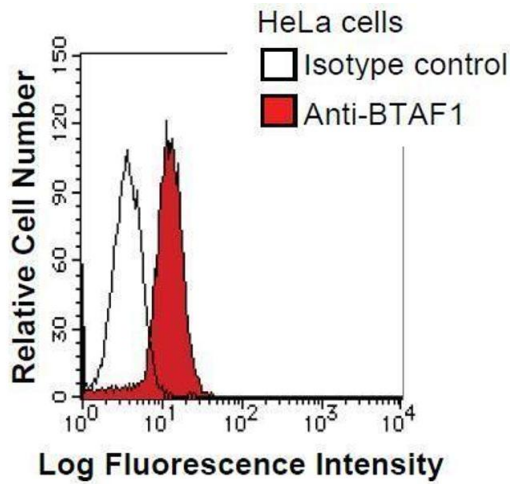
Preservative: Sodium azide

Precaution of Use: This product contains Sodium Azide: a POISONOUS AND HAZARDOUS SUBSTANCE, which should be handled by trained staff only.

Handling Advice: Avoid repeated freeze/thaw cycles.
Dilute only prior to immediate use.

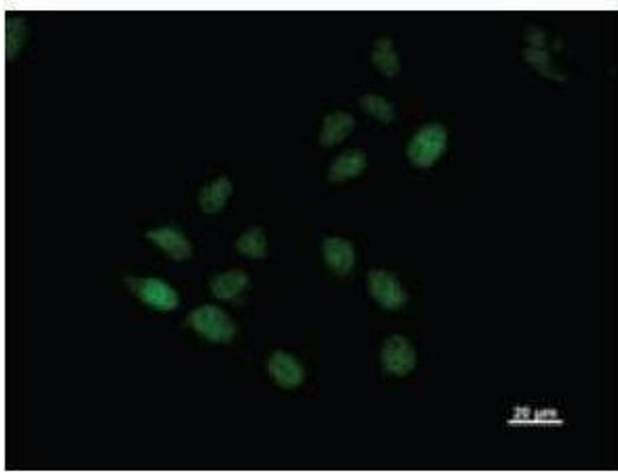
Storage: 4 °C/-20 °C

Storage Comment: Store at 2-8 °C for up to one year. We recommend long term storage at -20 °C.



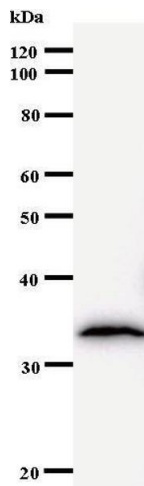
Flow Cytometry

Image 1. HeLa cells were fixed in 2% paraformaldehyde/PBS and then permeabilized in 90% methanol. Cells were stained with anti-BTAF1 antibody (shaded) or isotype control (unshaded) followed by Alexa Fluor 488 conjugated goat anti-mouse IgG.



Immunofluorescence

Image 2. Immunostaining analysis in HeLa cells. HeLa cells were fixed with 4% paraformaldehyde and permeabilized with 0.1% Triton X-100 in PBS. The cells were stained with anti-BTAF1 antibody.



Western Blotting

Image 3.