

Datasheet for ABIN933092  
**anti-MYBL2 antibody**



[Go to Product page](#)

2 Images

## Overview

Quantity:	100 µg
Target:	MYBL2
Reactivity:	Human
Host:	Mouse
Clonality:	Monoclonal
Conjugate:	This MYBL2 antibody is un-conjugated
Application:	Western Blotting (WB), ELISA, Immunocytochemistry (ICC)

## Product Details

Immunogen:	MYBL2 antibody was raised in mouse using recombinant V-Myb Myeloblastosis Viral Oncogene Homolog (Avian)-Like 2 (Mybl2)
Clone:	MYBAD10A
Isotype:	IgG1
Cross-Reactivity:	Human, Mouse (Murine), Rat (Rattus)
Cross-Reactivity (Details):	Other species not studied.
Purification:	Protein G affinity chromatography

## Target Details

Target:	MYBL2
Alternative Name:	MYBL2 ( <a href="#">MYBL2 Products</a> )

## Target Details

---

**Background:** The protein encoded by this gene, a member of the MYB family of transcription factor genes, is a nuclear protein involved in cell cycle progression. The encoded protein is phosphorylated by cyclin A/cyclin-dependent kinase 2 during the S-phase of the cell cycle and possesses both activator and repressor activities. It has been shown to activate the cell division cycle 2, cyclin D1, and insulin-like growth factor-binding protein 5 genes. Transcript variants may exist for this gene, but their fulllength natures have not been determined. Synonyms: Monoclonal MYBL2 antibody, Anti-MYBL2 antibody, Myeloblastosis viral oncogene homolog (avian)-like 2 antibody, BMYB antibody, MGC15600 antibody.

**Pathways:** [Cell Division Cycle](#), [Mitotic G1-G1/S Phases](#), [Chromatin Binding](#)

## Application Details

---

**Application Notes:** WB: 0.2-2 µg/mL, ICC: 2-100 µg/mL  
Optimal conditions should be determined by the investigator.

**Restrictions:** For Research Use only

## Handling

---

**Concentration:** Lot specific

**Buffer:** MYBL2 antibody in PBS (3.0 mM KCl, 1.5 mM KH<sub>2</sub> PO<sub>4</sub>, 140 mM NaCl, 8.0 mM Na<sub>2</sub> PO<sub>4</sub> (pH 7.4)) containing 1 % bovine serum albumin (BSA) and 0.05 % sodium azide (NaN<sub>3</sub>).

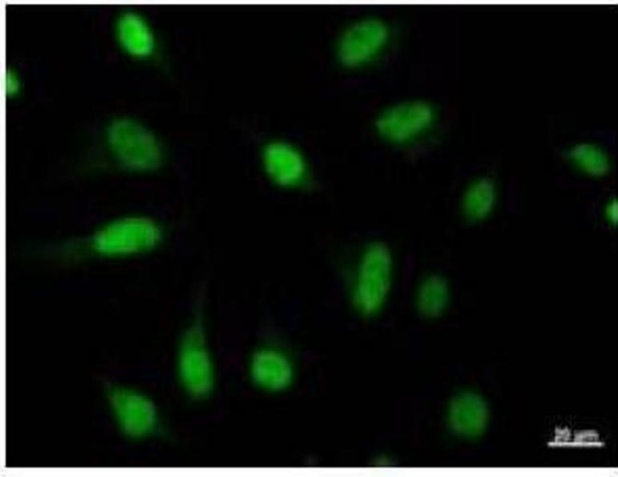
**Preservative:** Sodium azide

**Precaution of Use:** This product contains Sodium Azide: a POISONOUS AND HAZARDOUS SUBSTANCE, which should be handled by trained staff only.

**Handling Advice:** Avoid repeated freeze/thaw cycles.  
Dilute only prior to immediate use.

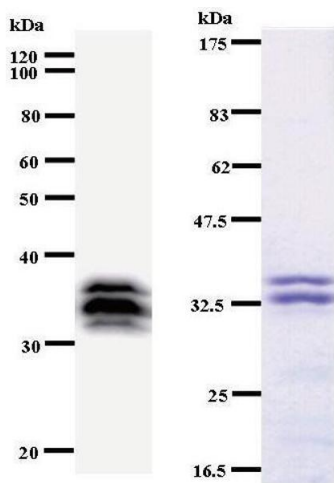
**Storage:** 4 °C/-20 °C

**Storage Comment:** Store at 2-8 °C for up to one year. We recommend long term storage at -20 °C.



### Immunofluorescence

**Image 1.** Immunostaining analysis in HeLa cells. HeLa cells were fixed with 4% paraformaldehyde and permeabilized with 0.1% Triton X-100 in PBS. The cells were stained with anti-MYBL2 antibody.



### Western Blotting

**Image 2.** Left: MYBL2 staining. Right: Coomassie Blue staining of immunized recombinant protein.