

Datasheet for ABIN933093
anti-SCML2 antibody



[Go to Product page](#)

1 Image

Overview

Quantity:	100 µg
Target:	SCML2
Reactivity:	Human
Host:	Mouse
Clonality:	Monoclonal
Conjugate:	This SCML2 antibody is un-conjugated
Application:	Western Blotting (WB), Dot Blot (DB)

Product Details

Immunogen:	SCML2 antibody was raised in mouse using recombinant Human Sex Comb On Midleg-Like 2 (Drosophila) (Scml2)
Clone:	SCMAD14A
Isotype:	IgG1
Cross-Reactivity:	Human, Mouse (Murine), Rat (Rattus)
Cross-Reactivity (Details):	Other species not studied.
Purification:	Protein G affinity chromatography

Target Details

Target:	SCML2
Alternative Name:	SCML2 (SCML2 Products)

Target Details

Background: Putative Polycomb group (PcG) protein. PcG proteins act by forming multiprotein complexes, which are required to maintain the transcriptionally repressive state of homeotic genes throughout development. Synonyms: Monoclonal SCML2 antibody, Anti-SCML2 antibody, Sex comb on midleg-like 2 antibody.

Application Details

Application Notes: WB: 0.2-2 µg/mL
Optimal conditions should be determined by the investigator.

Restrictions: For Research Use only

Handling

Concentration: Lot specific

Buffer: SCML2 antibody in PBS (3.0 mM KCl, 1.5 mM KH₂ PO₄, 140 mM NaCl, 8.0 mM Na₂ PO₄ (pH 7.4)) containing 1 % bovine serum albumin (BSA) and 0.05 % sodium azide (NaN₃).

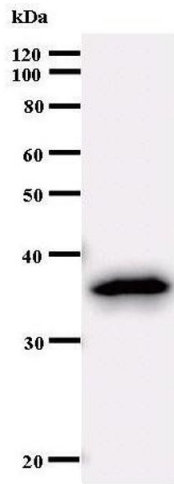
Preservative: Sodium azide

Precaution of Use: This product contains Sodium Azide: a POISONOUS AND HAZARDOUS SUBSTANCE, which should be handled by trained staff only.

Handling Advice: Avoid repeated freeze/thaw cycles.
Dilute only prior to immediate use.

Storage: 4 °C/-20 °C

Storage Comment: Store at 2-8 °C for up to one year. We recommend long term storage at -20 °C.



Western Blotting

Image 1.