

Datasheet for ABIN933101 **anti-PAX8 antibody**

3 Images



[Go to Product page](#)

Overview

| | |
|--------------|---|
| Quantity: | 100 µg |
| Target: | PAX8 |
| Reactivity: | Human |
| Host: | Mouse |
| Clonality: | Monoclonal |
| Conjugate: | This PAX8 antibody is un-conjugated |
| Application: | Western Blotting (WB), Flow Cytometry (FACS), Immunoprecipitation (IP), Immunocytochemistry (ICC), Dot Blot (DB) |

Product Details

| | |
|-----------------------------|---|
| Immunogen: | PAX8 antibody was raised in mouse using recombinant Paired Box Gene 8 |
| Clone: | PAX8R1 |
| Isotype: | IgG1 |
| Cross-Reactivity: | Human, Mouse (Murine), Rat (Rattus) |
| Cross-Reactivity (Details): | Other species not studied. |
| Purification: | Protein G affinity chromatography |

Target Details

| | |
|-------------------|--|
| Target: | PAX8 |
| Alternative Name: | PAX8 (PAX8 Products) |

Target Details

Background: This gene is a member of the paired box (PAX) family of transcription factors. Members of this gene family typically encode proteins which contain a paired box domain, an octapeptide, and a paired-type homeodomain. This nuclear protein is involved in thyroid follicular cell development and expression of thyroid-specific genes. Mutations in this gene have been associated with thyroid dysgenesis, thyroid follicular carcinomas and atypical follicular thyroid adenomas. Alternate transcriptional splice variants, encoding different isoforms, have been characterized. Synonyms: Monoclonal PAX8 antibody, Anti-PAX8 antibody, Paired box gene 8 antibody.

Pathways: [Thyroid Hormone Synthesis](#), [Regulation of Hormone Metabolic Process](#), [Stem Cell Maintenance](#), [Tube Formation](#)

Application Details

Application Notes: WB: 0.2-2 µg/mL, IP: 100-500 µg/sample, FC: 0.5-2 µg/sample, ICC: 2-100 µg/mL
Optimal conditions should be determined by the investigator.

Restrictions: For Research Use only

Handling

Concentration: Lot specific

Buffer: PAX8 antibody in PBS (3.0 mM KCl, 1.5 mM KH₂ PO₄, 140 mM NaCl, 8.0 mM Na₂ HPO₄ (pH 7.4)) containing 1 % bovine serum albumin (BSA) and 0.05 % sodium azide (NaN₃).

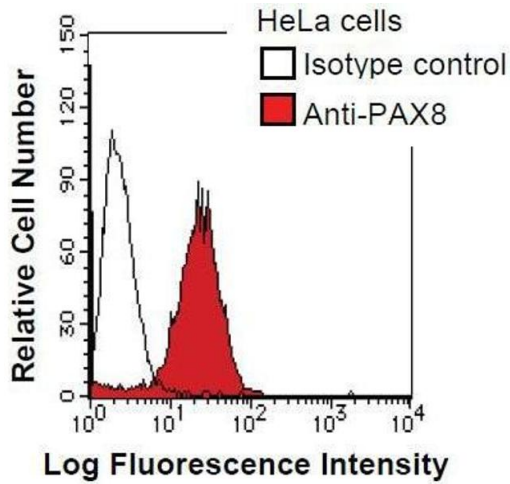
Preservative: Sodium azide

Precaution of Use: This product contains Sodium Azide: a POISONOUS AND HAZARDOUS SUBSTANCE, which should be handled by trained staff only.

Handling Advice: Avoid repeated freeze/thaw cycles.
Dilute only prior to immediate use.

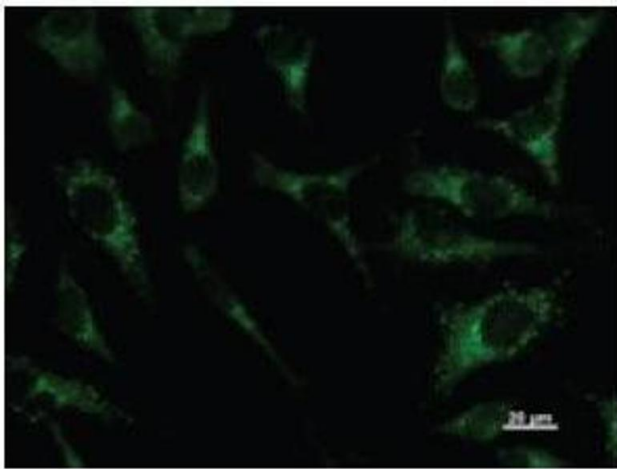
Storage: 4 °C/-20 °C

Storage Comment: Store at 2-8 °C for up to one year. We recommend long term storage at -20 °C.



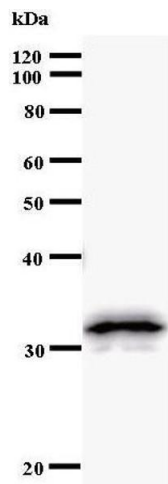
Flow Cytometry

Image 1. HeLa cells were fixed in 2% paraformaldehyde/PBS and then permeabilized in 90% methanol. Cells were stained with anti-PAX8 antibody (shaded) or isotype control (unshaded) followed by Alexa Fluor 488 conjugated goat anti-mouse IgG.



Immunofluorescence

Image 2. Immunostaining analysis in HeLa cells. HeLa cells were fixed with 4% paraformaldehyde and permeabilized with 0.01% Triton-PAX8 in PBS. The cells were immunostained with anti-GATAD1 antibody.



Western Blotting

Image 3.