

## Datasheet for ABIN933107 **anti-TAF6 antibody**

### 2 Images



[Go to Product page](#)

### Overview

Quantity:	50 µg
Target:	TAF6
Reactivity:	Human
Host:	Mouse
Clonality:	Monoclonal
Conjugate:	This TAF6 antibody is un-conjugated
Application:	Western Blotting (WB), Immunoprecipitation (IP), Immunocytochemistry (ICC), Dot Blot (DB)

### Product Details

Immunogen:	TAF6 antibody was raised in mouse using recombinant Human Taf6 Rna Polymerase Ii, Tata Box Binding Protein (Tbp)-Associated Factor, 80 Kda (Taf6)
Clone:	585D4a
Isotype:	IgG1
Cross-Reactivity:	Human, Mouse (Murine), Rat (Rattus)
Cross-Reactivity (Details):	Other species not studied.
Purification:	Protein G affinity chromatography

### Target Details

Target:	TAF6
Alternative Name:	TAF6 ( <a href="#">TAF6 Products</a> )

## Target Details

---

**Background:** Initiation of transcription by RNA polymerase II requires the activities of more than 70 polypeptides. The protein that coordinates these activities is transcription factor IID (TFIID), which binds to the core promoter to position the polymerase properly, serves as the scaffold for assembly of the remainder of the transcription complex, and acts as a channel for regulatory signals. TFIID is composed of the TATA-binding protein (TBP) and a group of evolutionarily conserved proteins known as TBP-associated factors or TAFs. TAFs may participate in basal transcription, serve as coactivators, function in promoter recognition or modify general transcription factors (GTFs) to facilitate complex assembly and transcription initiation. This gene encodes one of the smaller subunits of TFIID that binds weakly to TBP but strongly to TAF1, the largest subunit of TFIID. Synonyms: Monoclonal TAF6 antibody, Anti-TAF6 antibody, Transcription initiation factor TFIID subunit 6 antibody, TAF2E antibody, TAFII70 antibody, TAFII80 antibody, TAFII85 antibody, MGC:8964 antibody, DKFZp781E21155 antibody.

## Application Details

---

**Application Notes:** WB: 0.2-2 µg/mL, IP: 100-500 µg/sample, ICC: 2-100 µg/mL  
Optimal conditions should be determined by the investigator.

**Restrictions:** For Research Use only

## Handling

---

**Concentration:** Lot specific

**Buffer:** TAF6 antibody in PBS (3.0 mM KCl, 1.5 mM KH<sub>2</sub> PO<sub>4</sub>, 140 mM NaCl, 8.0 mM Na<sub>2</sub> HPO<sub>4</sub> (pH 7.4)) containing 1 % bovine serum albumin (BSA) and 0.05 % sodium azide (NaN<sub>3</sub>).

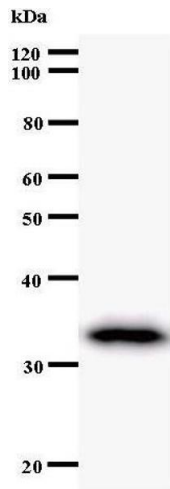
**Preservative:** Sodium azide

**Precaution of Use:** This product contains Sodium Azide: a POISONOUS AND HAZARDOUS SUBSTANCE, which should be handled by trained staff only.

**Handling Advice:** Avoid repeated freeze/thaw cycles.  
Dilute only prior to immediate use.

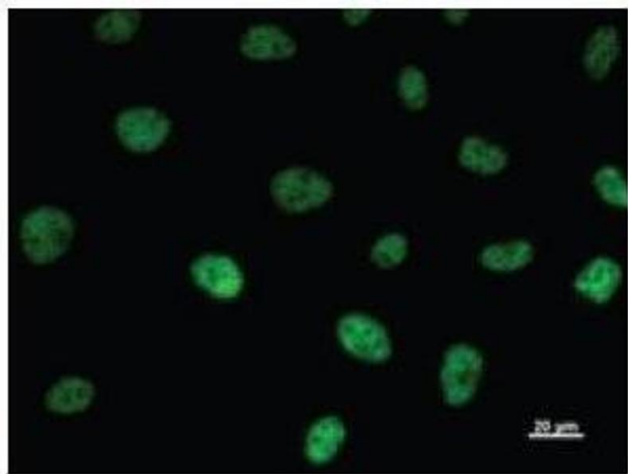
**Storage:** 4 °C/-20 °C

**Storage Comment:** Store at 2-8 °C for up to one year. We recommend long term storage at -20 °C.



### Western Blotting

Image 1.



### Immunofluorescence

**Image 2.** Immunostaining analysis in HeLa cells. HeLa cells were fixed with 4% paraformaldehyde and permeabilized with 0.01% Triton-X100 in PBS. The cells were immunostained with anti-TAF6 antibody.