

Datasheet for ABIN933108 **anti-CDC5L antibody**

3 Images



[Go to Product page](#)

Overview

Quantity:	100 µg
Target:	CDC5L
Reactivity:	Human
Host:	Mouse
Clonality:	Monoclonal
Conjugate:	This CDC5L antibody is un-conjugated
Application:	Western Blotting (WB), Flow Cytometry (FACS), Immunoprecipitation (IP), Immunocytochemistry (ICC), Dot Blot (DB)

Product Details

Immunogen:	CDC5 L antibody was raised in mouse using recombinant Human Cdc5 Cell Division Cycle 5-Like (S. Pombe) (Cdc5)
Clone:	2136C1a
Isotype:	IgG1
Cross-Reactivity:	Human, Mouse (Murine), Rat (Rattus)
Cross-Reactivity (Details):	Other species not studied.
Purification:	Protein G affinity chromatography

Target Details

Target:	CDC5L
---------	-------

Target Details

Alternative Name: [CDC5L \(CDC5L Products\)](#)

Background: The protein encoded by this gene shares a significant similarity with *Schizosaccharomyces pombe* *cdc5* gene product, which is a cell cycle regulator important for G2/M transition. This protein has been demonstrated to act as a positive regulator of cell cycle G2/M progression. It was also found to be an essential component of a non-snRNA spliceosome, which contains at least five additional protein factors and is required for the second catalytic step of pre-mRNA splicing. Synonyms: Monoclonal CDC5L antibody, Anti-CDC5L antibody, CDC5 cell division cycle 5-like antibody, CEF1 antibody, hCDC5 antibody, PCDC5RP antibody, KIAA0432 antibody, dJ319D22.1 antibody.

Pathways: [Activation of Innate immune Response](#), [Chromatin Binding](#)

Application Details

Application Notes: WB: 0.2-2 µg/mL, IP: 100-500 µg/sample, FC: 0.5-2 µg/sample, ICC: 2-100 µg/mL
Optimal conditions should be determined by the investigator.

Restrictions: For Research Use only

Handling

Concentration: Lot specific

Buffer: CDC5 L antibody in PBS (3.0 mM KCl, 1.5 mM KH₂ PO₄, 140 mM NaCl, 8.0 mM Na₂ HPO₄ (pH 7.4)) containing 1 % bovine serum albumin (BSA) and 0.05 % sodium azide (NaN₃).

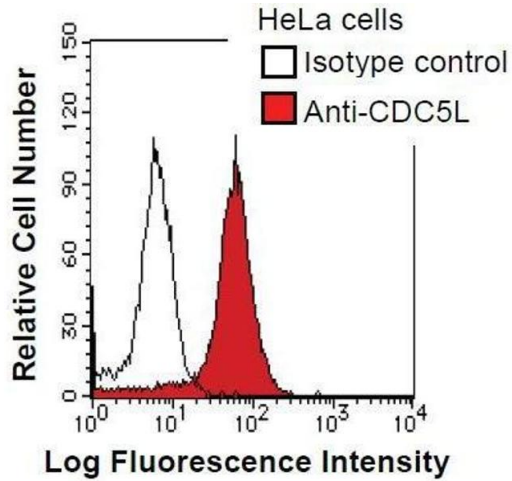
Preservative: Sodium azide

Precaution of Use: This product contains Sodium Azide: a POISONOUS AND HAZARDOUS SUBSTANCE, which should be handled by trained staff only.

Handling Advice: Avoid repeated freeze/thaw cycles.
Dilute only prior to immediate use.

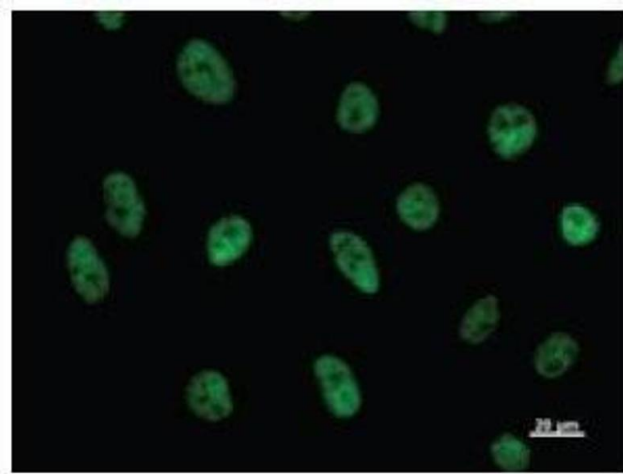
Storage: 4 °C/-20 °C

Storage Comment: Store at 2-8 °C for up to one year. We recommend long term storage at -20 °C.



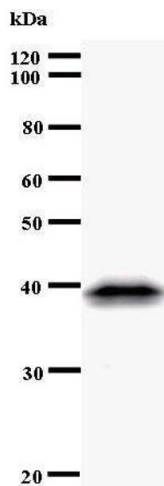
Flow Cytometry

Image 1. HeLa cells were fixed in 2% paraformaldehyde/PBS and then permeabilized in 90% methanol. Cells were stained with anti-CDC5L antibody (shaded) or isotype control (unshaded) followed by Alexa Fluor 488 conjugated goat anti-mouse IgG.



Immunofluorescence

Image 2. Immunostaining analysis in HeLa cells. HeLa cells were fixed with 4% paraformaldehyde and permeabilized with 0.01% Triton-X100 in PBS. The cells were immunostained with anti-CDC5L antibody.



Western Blotting

Image 3.