

Datasheet for ABIN933109  
**anti-ASH2L antibody**

3 Images



[Go to Product page](#)

## Overview

Quantity:	100 µg
Target:	ASH2L
Reactivity:	Human
Host:	Mouse
Clonality:	Monoclonal
Conjugate:	This ASH2L antibody is un-conjugated
Application:	Western Blotting (WB), Immunocytochemistry (ICC), Flow Cytometry (FACS), Dot Blot (DB)

## Product Details

Immunogen:	ASH2 L antibody was raised in mouse using recombinant Human Ash2 (Absent, Small, Or Homeotic)-Like (Drosophila) (Ash2 )
Clone:	2046D2a
Isotype:	IgG1
Cross-Reactivity:	Human, Mouse (Murine), Rat (Rattus)
Cross-Reactivity (Details):	Other species not studied.
Purification:	Protein G affinity chromatography

## Target Details

Target:	ASH2L
Alternative Name:	ASH2L ( <a href="#">ASH2L Products</a> )

## Target Details

---

**Background:** Component of the Set1/Ash2 histone methyltransferase (HMT) complex, a complex that specifically methylates 'Lys-4' of histone H3, but not if the neighboring 'Lys-9' residue is already methylated. May function as a transcriptional regulator. May play a role in hematopoiesis.  
Synonyms: Monoclonal ASH2L antibody, Anti-ASH2L antibody, Ash2 histone methyltransferase complex subunit antibody, ASH2 antibody, ASH2L1 antibody, ASH2L2 antibody.

## Application Details

---

**Application Notes:** WB: 0.2-2 µg/mL, FC: 0.5-2 µg/sample, ICC: 2-100 µg/mL  
Optimal conditions should be determined by the investigator.

**Restrictions:** For Research Use only

## Handling

---

**Concentration:** Lot specific

**Buffer:** ASH2 L antibody in PBS (3.0 mM KCl, 1.5 mM KH<sub>2</sub> PO<sub>4</sub>, 140 mM NaCl, 8.0 mM Na<sub>2</sub> HPO<sub>4</sub> (pH 7.4)) containing 1 % bovine serum albumin (BSA) and 0.05 % sodium azide (NaN<sub>3</sub>).

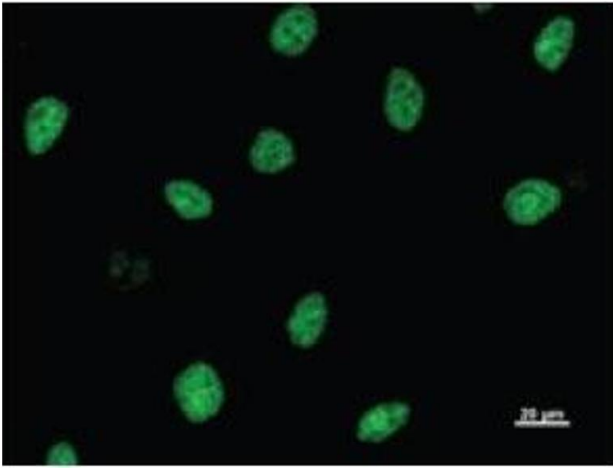
**Preservative:** Sodium azide

**Precaution of Use:** This product contains Sodium Azide: a POISONOUS AND HAZARDOUS SUBSTANCE, which should be handled by trained staff only.

**Handling Advice:** Avoid repeated freeze/thaw cycles.  
Dilute only prior to immediate use.

**Storage:** 4 °C/-20 °C

**Storage Comment:** Store at 2-8 °C for up to one year. We recommend long term storage at -20 °C.



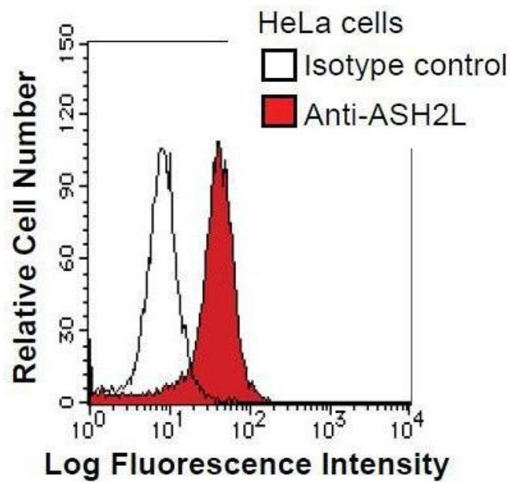
### Immunofluorescence

**Image 1.** Immunostaining analysis in HeLa cells. HeLa cells were fixed with 4% paraformaldehyde and permeabilized with 0.01% Triton-X100 in PBS. The cells were immunostained with anti-ASH2L antibody.



### Western Blotting

**Image 2.**



### Flow Cytometry

**Image 3.** HeLa cells were fixed in 2% paraformaldehyde/PBS and then permeabilized in 90% methanol. Cells were stained with anti-ASH2L antibody (shaded) or isotype control (unshaded) followed by Alexa Fluor 488 conjugated goat anti-mouse IgG.