

Datasheet for ABIN933111 **anti-TWIST1 antibody**

3 Images



[Go to Product page](#)

Overview

Quantity:	100 µg
Target:	TWIST1
Reactivity:	Human
Host:	Mouse
Clonality:	Monoclonal
Conjugate:	This TWIST1 antibody is un-conjugated
Application:	Western Blotting (WB), Immunocytochemistry (ICC), Flow Cytometry (FACS), Dot Blot (DB)

Product Details

Immunogen:	TWIST antibody was raised in mouse using recombinant Human Twist Homolog 1 (Acrocephalosyndactyly 3, Saethre-Chotzen Syndrome) (Drosophila) (Twist1)
Clone:	Twist2C1a
Isotype:	IgG1
Cross-Reactivity:	Human, Mouse (Murine), Rat (Rattus)
Cross-Reactivity (Details):	Other species not studied.
Purification:	Protein G affinity chromatography

Target Details

Target:	TWIST1
Alternative Name:	TWIST (TWIST1 Products)

Target Details

Background: Basic helix-loop-helix (bHLH) transcription factors have been implicated in cell lineage determination and differentiation. The protein encoded by this gene is a bHLH transcription factor and shares similarity with another bHLH transcription factor, Dermo1. The strongest expression of this mRNA is in placental tissue, in adults, mesodermally derived tissues express this mRNA preferentially. Mutations in this gene have been found in patients with Saethre-Chotzen syndrome. Synonyms: Monoclonal TWIST antibody, Anti-TWIST antibody, Twist related protein 1 antibody, SCS antibody, ACS3 antibody, BPES2 antibody, BPES3 antibody, TWIST1 antibody.

Pathways: [p53 Signaling](#), [Proton Transport](#), [Tube Formation](#), [Negative Regulation of Transporter Activity](#)

Application Details

Application Notes: WB: 0.2-2 µg/mL, FC: 0.5-2 µg/sample, ICC: 2-100 µg/mL
Optimal conditions should be determined by the investigator.

Restrictions: For Research Use only

Handling

Concentration: Lot specific

Buffer: TWIST antibody in PBS (3.0 mM KCl, 1.5 mM KH₂ PO₄, 140 mM NaCl, 8.0 mM Na₂ HPO₄ (pH 7.4)) containing 1 % bovine serum albumin (BSA) and 0.05 % sodium azide (NaN₃).

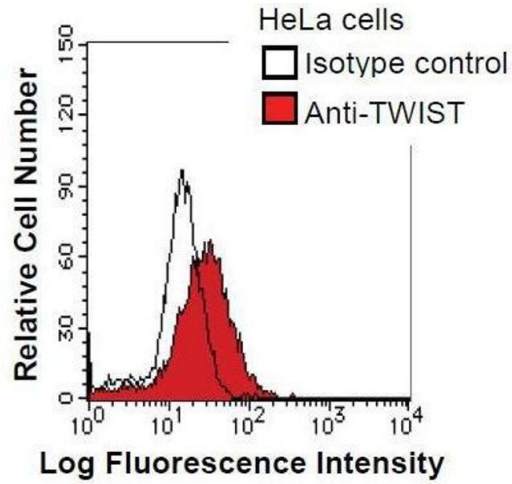
Preservative: Sodium azide

Precaution of Use: This product contains Sodium Azide: a POISONOUS AND HAZARDOUS SUBSTANCE, which should be handled by trained staff only.

Handling Advice: Avoid repeated freeze/thaw cycles.
Dilute only prior to immediate use.

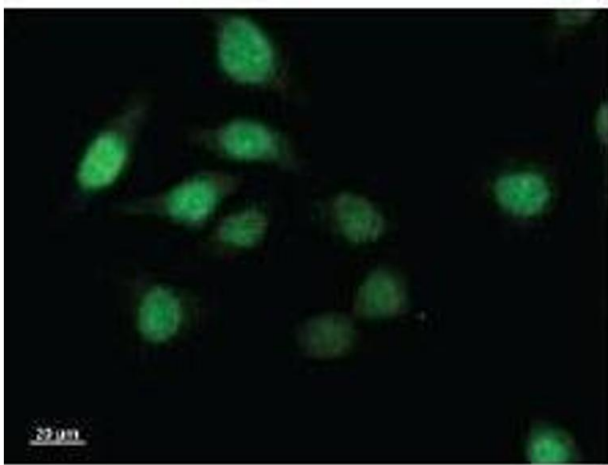
Storage: 4 °C/-20 °C

Storage Comment: Store at 2-8 °C for up to one year. We recommend long term storage at -20 °C.



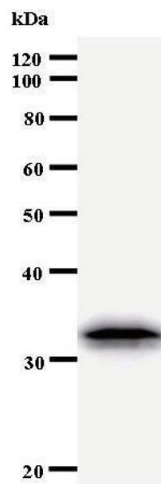
Flow Cytometry

Image 1. HeLa cells were fixed in 2% paraformaldehyde/PBS and then permeabilized in 90% methanol. Cells were stained with anti-TWIST antibody (shaded) or isotype control (unshaded) followed by Alexa Fluor 488 conjugated goat anti-mouse IgG.



Immunofluorescence

Image 2. Immunostaining analysis in HeLa cells. HeLa cells were fixed with 4% paraformaldehyde and permeabilized with 0.01% Triton-X100 in PBS. The cells were immunostained with anti-TWIST antibody.



Western Blotting

Image 3.