

## Datasheet for ABIN933115 **anti-FKBP3 antibody**

### 2 Images



[Go to Product page](#)

### Overview

|              |   |
|--------------|---|
| Quantity:    | 50 µg   |
| Target:      | FKBP3   |
| Reactivity:  | Human   |
| Host:        | Mouse   |
| Clonality:   | Monoclonal  |
| Conjugate:   | This FKBP3 antibody is un-conjugated                            |
| Application: | Western Blotting (WB), Immunocytochemistry (ICC), Dot Blot (DB) |

### Product Details

|                             |  |
|-----------------------------|--|
| Immunogen:                  | FKBP3 antibody was raised in mouse using recombinant Human Fk506 Binding Protein 3, 25 Kda (Fkbp3) |
| Clone:                      | 2364C3   |
| Isotype:                    | IgG1   |
| Cross-Reactivity:           | Human, Mouse (Murine), Rat (Rattus)  |
| Cross-Reactivity (Details): | Other species not studied.   |
| Purification:               | Protein G affinity chromatography  |

### Target Details

|                   |  |
|-------------------|--|
| Target:           | FKBP3                                    |
| Alternative Name: | FKBP3 ( <a href="#">FKBP3 Products</a> ) |

## Target Details

---

**Background:** The protein encoded by this gene is a member of the immunophilin protein family, which play a role in immunoregulation and basic cellular processes involving protein folding and trafficking. This encoded protein is a cis-trans prolyl isomerase that binds the immunosuppressants FK506 and rapamycin. It has a higher affinity for rapamycin than for FK506 and thus may be an important target molecule for immunosuppression by rapamycin. Synonyms: Monoclonal FKBP3 antibody, Anti-FKBP3 antibody, FK506-binding protein 3 antibody, PPIase antibody, FKBP-25 antibody.

## Application Details

---

**Application Notes:** WB: 0.2-2 µg/mL, ICC: 2-100 µg/mL  
Optimal conditions should be determined by the investigator.

**Restrictions:** For Research Use only

## Handling

---

**Concentration:** Lot specific

**Buffer:** FKBP3 antibody in PBS (3.0 mM KCl, 1.5 mM KH<sub>2</sub> PO<sub>4</sub>, 140 mM NaCl, 8.0 mM Na<sub>2</sub> HPO<sub>4</sub> (pH 7.4)) containing 1 % bovine serum albumin (BSA) and 0.05 % sodium azide (NaN<sub>3</sub>).

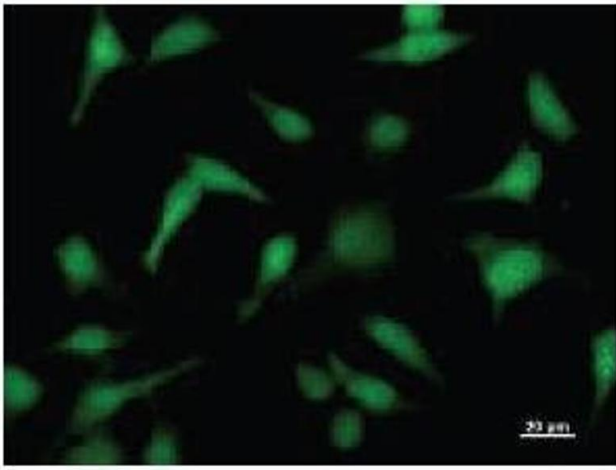
**Preservative:** Sodium azide

**Precaution of Use:** This product contains Sodium Azide: a POISONOUS AND HAZARDOUS SUBSTANCE, which should be handled by trained staff only.

**Handling Advice:** Avoid repeated freeze/thaw cycles.  
Dilute only prior to immediate use.

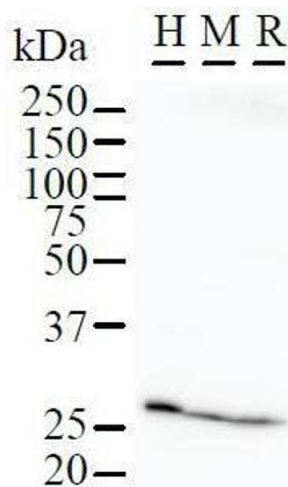
**Storage:** 4 °C/-20 °C

**Storage Comment:** Store at 2-8 °C for up to one year. We recommend long term storage at -20 °C.



### Immunofluorescence

**Image 1.** Immunostaining analysis in HeLa cells. HeLa cells were fixed with 4% paraformaldehyde and permeabilized with 0.01% Triton-X100 in PBS. The cells were immunostained with anti-FKBP3 antibody.



### Western Blotting

**Image 2.** Detection of FBP3 by Western Blot. Samples: Whole cell lysate from human HeLa (H, 50ug), mouse NIH3T3 (M, 50ug) and rat F2408 (R, 50ug) cells.