

## Datasheet for ABIN933116 **anti-ABCF2 antibody**

### 2 Images



[Go to Product page](#)

### Overview

Quantity:	100 µg
Target:	ABCF2
Reactivity:	Human
Host:	Mouse
Clonality:	Monoclonal
Conjugate:	This ABCF2 antibody is un-conjugated
Application:	Western Blotting (WB), Immunoprecipitation (IP), Flow Cytometry (FACS), Dot Blot (DB)

### Product Details

Immunogen:	ABCF2 antibody was raised in mouse using recombinant Human Atp-Binding Cassette, Sub-Family F (Gcn20), Member 2 (Abcf2), Nuclear Gene Encoding Mitochondrial Protein
Clone:	2001C1
Isotype:	IgG1
Cross-Reactivity:	Human, Mouse (Murine), Rat (Rattus)
Cross-Reactivity (Details):	Other species not studied.
Purification:	Protein G affinity chromatography

### Target Details

Target:	ABCF2
Alternative Name:	ABCF2 ( <a href="#">ABCF2 Products</a> )

## Target Details

---

**Background:** The protein encoded by this gene is a member of the superfamily of ATP-binding cassette (ABC) transporters. ABC proteins transport various molecules across extra- and intracellular membranes. ABC genes are divided into seven distinct subfamilies (ABC1, MDR/TAP, MRP, ALD, OABP, GCN20, and White). This protein is a member of the GCN20 subfamily. Alternative splicing of this gene results in multiple transcript variants. Synonyms: Monoclonal ABCF2 antibody, Anti-ABCF2 antibody, ATP-binding cassette sub-family F member 2 antibody, ABC28 antibody, M-ABC1 antibody, HUSSY-18 antibody, EST133090 antibody, DKFZp586K1823 antibody.

## Application Details

---

**Application Notes:** WB: 0.2-2 µg/mL, IP: 100-500 µg/sample, FC: 0.5-2 µg/sample  
Optimal conditions should be determined by the investigator.

**Restrictions:** For Research Use only

## Handling

---

**Concentration:** Lot specific

**Buffer:** ABCF2 antibody in PBS (3.0 mM KCl, 1.5 mM KH<sub>2</sub> PO<sub>4</sub>, 140 mM NaCl, 8.0 mM Na<sub>2</sub> HPO<sub>4</sub> (pH 7.4)) containing 1 % bovine serum albumin (BSA) and 0.05 % sodium azide (NaN<sub>3</sub>).

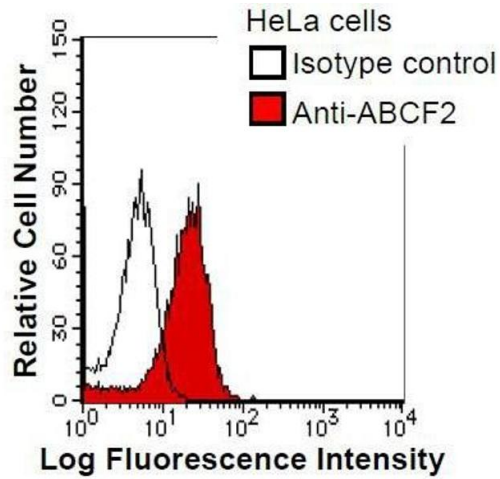
**Preservative:** Sodium azide

**Precaution of Use:** This product contains Sodium Azide: a POISONOUS AND HAZARDOUS SUBSTANCE, which should be handled by trained staff only.

**Handling Advice:** Avoid repeated freeze/thaw cycles.  
Dilute only prior to immediate use.

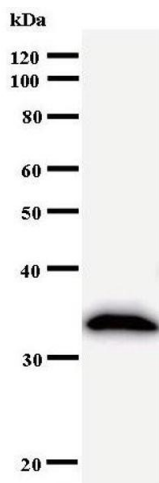
**Storage:** 4 °C/-20 °C

**Storage Comment:** Store at 2-8 °C for up to one year. We recommend long term storage at -20 °C.



### Flow Cytometry

**Image 1.** HeLa cells were fixed in 2% paraformaldehyde/PBS and then permeabilized in 90% methanol. Cells were stained with anti-ABCF2 mAb (shaded) or isotype control (unshaded) followed by Alexa Fluor 488 conjugated goat anti-mouse IgG.



### Western Blotting

**Image 2.**