

Datasheet for ABIN933117 **anti-NUDT21 antibody**

3 Images



[Go to Product page](#)

Overview

Quantity:	100 µg
Target:	NUDT21
Reactivity:	Human
Host:	Mouse
Clonality:	Monoclonal
Conjugate:	This NUDT21 antibody is un-conjugated
Application:	Western Blotting (WB), Immunoprecipitation (IP), Immunocytochemistry (ICC), Flow Cytometry (FACS), Dot Blot (DB)

Product Details

Immunogen:	NUDT21 antibody was raised in mouse using recombinant Human Nudix (Nucleoside Diphosphate Linked Moiety X)-Type Motif 21 (Nudt21)
Clone:	2203C3
Isotype:	IgG1
Cross-Reactivity:	Human, Mouse (Murine), Rat (Rattus)
Cross-Reactivity (Details):	Other species not studied.
Purification:	Protein G affinity chromatography

Target Details

Target:	NUDT21
---------	--------

Target Details

Alternative Name: [NUDT21 \(NUDT21 Products\)](#)

Background: The protein encoded by this gene is one subunit of a cleavage factor required for 3' RNA cleavage and polyadenylation processing. The interaction of the protein with the RNA is one of the earliest steps in the assembly of the 3' end processing complex and facilitates the recruitment of other processing factors. This gene encodes the 25kD subunit of the protein complex, which is composed of four polypeptides. Synonyms: Monoclonal NUDT21 antibody, Anti-NUDT21 antibody, Cleavage and polyadenylation specificity factor subunit 5 antibody, CPSF5 antibody, CFIM25 antibody, DKFZp686H1588 antibody.

Application Details

Application Notes: WB: 0.2-2 µg/mL, IP: 100-500 µg/sample, FC: 0.5-2 µg/sample, ICC: 2-100 µg/mL
Optimal conditions should be determined by the investigator.

Restrictions: For Research Use only

Handling

Concentration: Lot specific

Buffer: NUDT21 antibody in PBS (3.0 mM KCl, 1.5 mM KH₂PO₄, 140 mM NaCl, 8.0 mM Na₂HPO₄ (pH 7.4)) containing 1 % bovine serum albumin (BSA) and 0.05 % sodium azide (NaN₃).

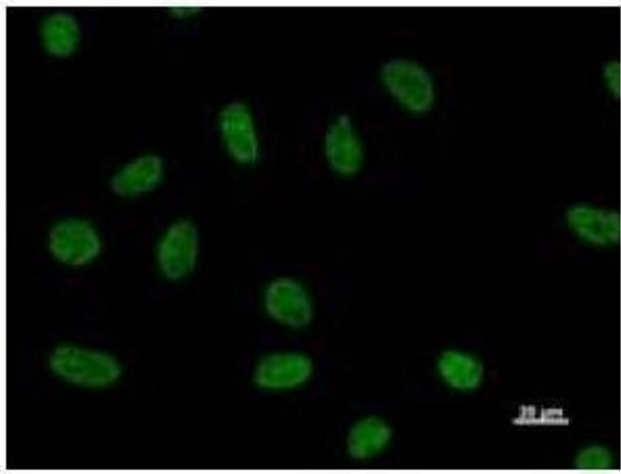
Preservative: Sodium azide

Precaution of Use: This product contains Sodium Azide: a POISONOUS AND HAZARDOUS SUBSTANCE, which should be handled by trained staff only.

Handling Advice: Avoid repeated freeze/thaw cycles.
Dilute only prior to immediate use.

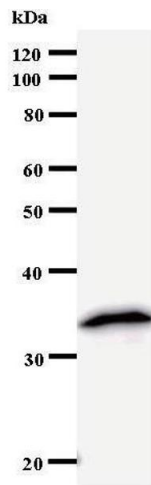
Storage: 4 °C/-20 °C

Storage Comment: Store at 2-8 °C for up to one year. We recommend long term storage at -20 °C.



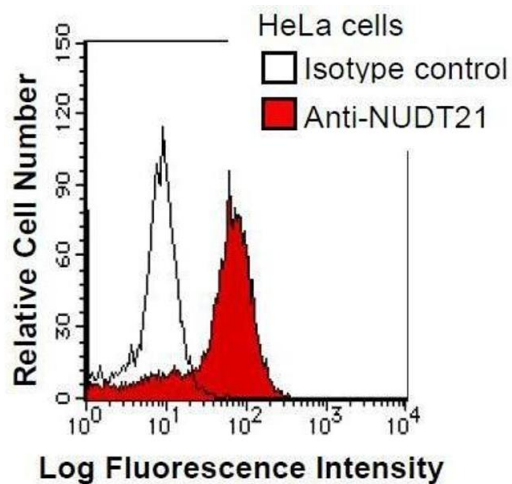
Immunofluorescence

Image 1. Immunostaining analysis in HeLa cells. HeLa cells were fixed with 4% paraformaldehyde and permeabilized with 0.01% Triton-X100 in PBS. The cells were immunostained with anti-NUDT21 antibody.



Western Blotting

Image 2.



Flow Cytometry

Image 3. HeLa cells were fixed in 2% paraformaldehyde/PBS and then permeabilized in 90% methanol. Cells were stained with anti-NUDT21 antibody (shaded) or isotype control (unshaded) followed by Alexa Fluor 488 conjugated goat anti-mouse IgG.