

Datasheet for ABIN933118 **anti-PRPF8 antibody**

3 Images



[Go to Product page](#)

Overview

Quantity:	100 µg
Target:	PRPF8
Reactivity:	Human
Host:	Mouse
Clonality:	Monoclonal
Conjugate:	This PRPF8 antibody is un-conjugated
Application:	Western Blotting (WB), Flow Cytometry (FACS), Immunocytochemistry (ICC), Dot Blot (DB)

Product Details

Immunogen:	PRPF8 antibody was raised in mouse using recombinant Human Prp8 Pre- Processing Factor 8 Homolog (Yeast) (Prpf8)
Clone:	2834C1a
Isotype:	IgG1
Cross-Reactivity:	Human, Mouse (Murine), Rat (Rattus)
Cross-Reactivity (Details):	Other species not studied.
Purification:	Protein G affinity chromatography

Target Details

Target:	PRPF8
Alternative Name:	PRPF8 (PRPF8 Products)

Target Details

Background: Pre-mRNA splicing occurs in 2 sequential transesterification steps. The protein encoded by this gene is a component of both U2- and U12-dependent spliceosomes, and found to be essential for the catalytic step II in pre-mRNA splicing process. It contains several WD repeats, which function in protein-protein interactions. This protein has a sequence similarity to yeast Prp8 protein. This gene is a candidate gene for autosomal dominant retinitis pigmentosa. Synonyms: Monoclonal PRPF8 antibody, Anti-PRPF8 antibody, PRP8 pre-mRNA processing factor 8 homolog antibody, PRP8 antibody, RP13 antibody, HPRP8 antibody, PRPC8 antibody.

Application Details

Application Notes: WB: 0.2-2 µg/mL, FC: 0.5-2 µg/sample, ICC: 2-100 µg/mL
Optimal conditions should be determined by the investigator.

Restrictions: For Research Use only

Handling

Concentration: Lot specific

Buffer: PRPF8 antibody in PBS (3.0 mM KCl, 1.5 mM KH₂ PO₄, 140 mM NaCl, 8.0 mM Na₂ HPO₄ (pH 7.4)) containing 1 % bovine serum albumin (BSA) and 0.05 % sodium azide (NaN₃).

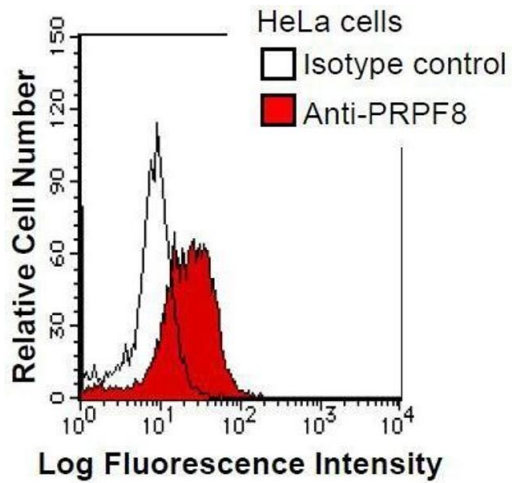
Preservative: Sodium azide

Precaution of Use: This product contains Sodium Azide: a POISONOUS AND HAZARDOUS SUBSTANCE, which should be handled by trained staff only.

Handling Advice: Avoid repeated freeze/thaw cycles.
Dilute only prior to immediate use.

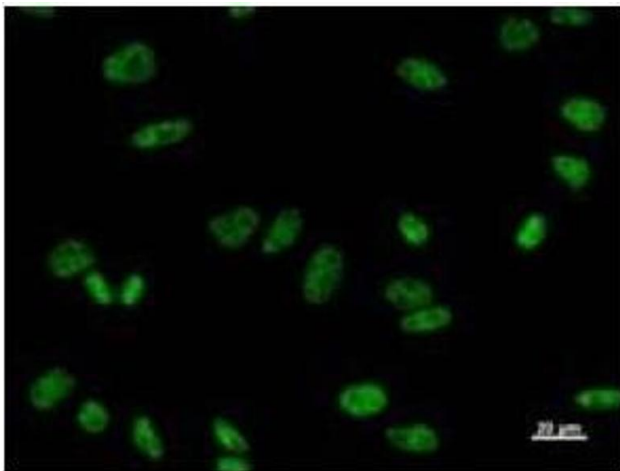
Storage: 4 °C/-20 °C

Storage Comment: Store at 2-8 °C for up to one year. We recommend long term storage at -20 °C.



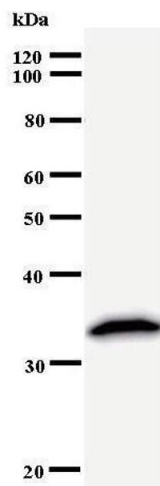
Flow Cytometry

Image 1. HeLa cells were fixed in 2% paraformaldehyde/PBS and then permeabilized in 90% methanol. Cells were stained with anti-PRPF8 antibody (shaded) or isotype control (unshaded) followed by Alexa Fluor 488 conjugated goat anti-mouse IgG.



Immunofluorescence

Image 2. Immunostaining analysis in HeLa cells. HeLa cells were fixed with 4% paraformaldehyde and permeabilized with 0.01% Triton-X100 in PBS. The cells were immunostained with anti-PRPF8 antibody.



Western Blotting

Image 3.