

Datasheet for ABIN933121  
**anti-PSMC5 antibody**

2 Images



[Go to Product page](#)

## Overview

Quantity:	100 µg
Target:	PSMC5
Reactivity:	Human
Host:	Mouse
Clonality:	Monoclonal
Application:	Western Blotting (WB), Immunocytochemistry (ICC), Dot Blot (DB)

## Product Details

Immunogen:	PSMC5 antibody was raised in mouse using recombinant Human Proteasome (Prosome, Macropain) 26 S Subunit, Atpase, 5 (Psmc5)
Clone:	2837C4a
Isotype:	IgG1
Cross-Reactivity:	Human, Mouse (Murine), Rat (Rattus)
Cross-Reactivity (Details):	Other species not studied.
Purification:	Protein G affinity chromatography

## Target Details

Target:	PSMC5
Alternative Name:	PSMC5 ( <a href="#">PSMC5 Products</a> )
Background:	The 26S proteasome is a multicatalytic proteinase complex with a highly ordered structure

## Target Details

---

composed of 2 complexes, a 20S core and a 19S regulator. The 20S core is composed of 4 rings of 28 non-identical subunits, 2 rings are composed of 7 alpha subunits and 2 rings are composed of 7 beta subunits. The 19S regulator is composed of a base, which contains 6 ATPase subunits and 2 non-ATPase subunits, and a lid, which contains up to 10 non-ATPase subunits. Proteasomes are distributed throughout eukaryotic cells at a high concentration and cleave peptides in an ATP/ubiquitin-dependent process in a nonlysosomal pathway. An essential function of a modified proteasome, the immunoproteasome, is the processing of class I MHC peptides. This gene encodes one of the ATPase subunits, a member of the triple-A family of ATPases which have a chaperone-like activity. Synonyms: Monoclonal PSMC5 antibody, Anti-PSMC5 antibody, 26S protease regulatory subunit 8 antibody, S8 antibody, p45 antibody, SUG1 antibody, TBP10 antibody, TRIP1 antibody, p45/SUG antibody.

Pathways: [Mitotic G1-G1/S Phases](#), [DNA Replication](#), [Synthesis of DNA](#), [Ubiquitin Proteasome Pathway](#)

## Application Details

---

Application Notes: WB: 0.2-2 µg/mL, ICC: 2-100 µg/mL  
Optimal conditions should be determined by the investigator.

Restrictions: For Research Use only

## Handling

---

Concentration: Lot specific

Buffer: PSMC5 antibody in PBS (3.0 mM KCl, 1.5 mM KH<sub>2</sub> PO<sub>4</sub>, 140 mM NaCl, 8.0 mM Na<sub>2</sub> HPO<sub>4</sub> (pH 7.4)) containing 1 % bovine serum albumin (BSA) and 0.05 % sodium azide (NaN<sub>3</sub>).

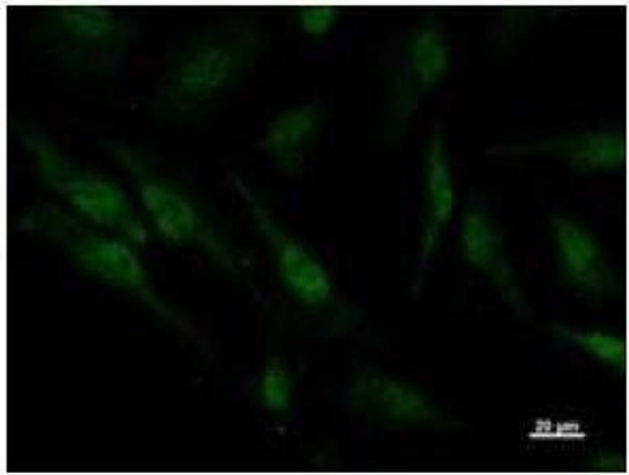
Preservative: Sodium azide

Precaution of Use: This product contains Sodium Azide: a POISONOUS AND HAZARDOUS SUBSTANCE, which should be handled by trained staff only.

Handling Advice: Avoid repeated freeze/thaw cycles.  
Dilute only prior to immediate use.

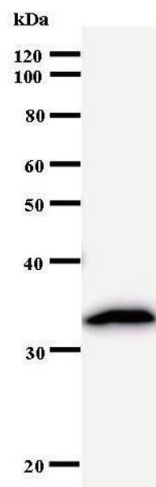
Storage: 4 °C/-20 °C

Storage Comment: Store at 2-8 °C for up to one year. We recommend long term storage at -20 °C.



### Immunofluorescence

**Image 1.** Immunostaining analysis in HeLa cells. HeLa cells were fixed with 4% paraformaldehyde and permeabilized with 0.01% Triton-X100 in PBS. The cells were immunostained with anti-PSMC5 antibody.



### Western Blotting

**Image 2.**