

Datasheet for ABIN933123
anti-RPP30 antibody

2 Images



[Go to Product page](#)

Overview

Quantity:	100 µg
Target:	RPP30
Reactivity:	Human
Host:	Mouse
Clonality:	Monoclonal
Conjugate:	This RPP30 antibody is un-conjugated
Application:	Western Blotting (WB), Immunocytochemistry (ICC), Dot Blot (DB)

Product Details

Immunogen:	RPP30 antibody was raised in mouse using recombinant Human Ribonuclease P/Mrp 30 Kda Subunit (Rpp30)
Clone:	2931D5a
Isotype:	IgG1
Cross-Reactivity:	Human, Mouse (Murine), Rat (Rattus)
Cross-Reactivity (Details):	Other species not studied.
Purification:	Protein G affinity chromatography

Target Details

Target:	RPP30
Alternative Name:	RPP30 (RPP30 Products)

Target Details

Background: RPP30 is a component of ribonuclease P, a protein complex that generates mature tRNA molecules by cleaving their 5'-ends. Synonyms: Monoclonal RPP30 antibody, Anti RPP30 antibody, Ribonuclease P protein subunit p30 antibody, TSG15 antibody, RP11-320F15.1 antibody.

Application Details

Application Notes: WB: 0.2-2 µg/mL, ICC: 2-100 µg/mL
Optimal conditions should be determined by the investigator.

Restrictions: For Research Use only

Handling

Concentration: Lot specific

Buffer: RPP30 antibody in PBS (3.0 mM KCl, 1.5 mM KH₂ PO₄, 140 mM NaCl, 8.0 mM Na₂ HPO₄ (pH 7.4)) containing 1 % bovine serum albumin (BSA) and 0.05 % sodium azide (NaN₃).

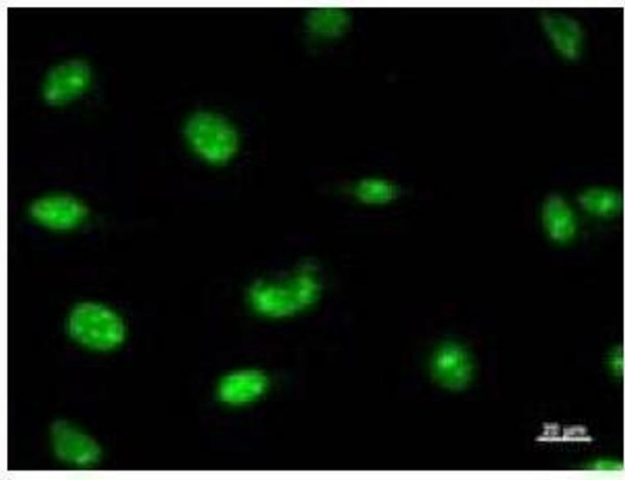
Preservative: Sodium azide

Precaution of Use: This product contains Sodium Azide: a POISONOUS AND HAZARDOUS SUBSTANCE, which should be handled by trained staff only.

Handling Advice: Avoid repeated freeze/thaw cycles.
Dilute only prior to immediate use.

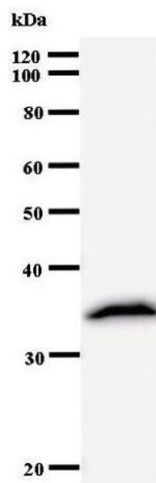
Storage: 4 °C/-20 °C

Storage Comment: Store at 2-8 °C for up to one year. We recommend long term storage at -20 °C.



Immunofluorescence

Image 1. Immunostaining analysis in HeLa cells. HeLa cells were fixed with 4% paraformaldehyde and permeabilized with 0.01% Triton-X100 in PBS. The cells were immunostained with anti-RPP30 antibody.



Western Blotting

Image 2.