

Datasheet for ABIN933124 **anti-POLR2G antibody**

2 Images



[Go to Product page](#)

Overview

Quantity:	100 µg
Target:	POLR2G
Reactivity:	Human
Host:	Mouse
Clonality:	Monoclonal
Conjugate:	This POLR2G antibody is un-conjugated
Application:	Western Blotting (WB), Flow Cytometry (FACS), Dot Blot (DB)

Product Details

Immunogen:	POLR2 G antibody was raised in mouse using recombinant Human Polymerase (Rna) li (Dna Directed) Polypeptide G (Polr2)
Clone:	2781C2a
Isotype:	IgG1
Cross-Reactivity:	Human, Mouse (Murine), Rat (Rattus)
Cross-Reactivity (Details):	Other species not studied.
Purification:	Protein G affinity chromatography

Target Details

Target:	POLR2G
Alternative Name:	POLR2G (POLR2G Products)

Target Details

Background: The homeodomain-containing transcription factor NKX3A is a putative prostate tumor suppressor that is expressed in a largely prostate-specific and androgen-regulated manner. Loss of NKX3A protein expression is a common finding in human prostate carcinomas and prostatic intraepithelial neoplasia. Synonyms: Monoclonal POLR2G antibody, Anti-POLR2G antibody, RNA polymerase II subunit B7 antibody, RPB7 antibody, hRPB19 antibody, hsRPB7 antibody, MGC138367 antibody, MGC138369 antibody.

Pathways: [Regulatory RNA Pathways](#)

Application Details

Application Notes: WB: 0.2-2 µg/mL, FC: 0.5-2 µg/sample
Optimal conditions should be determined by the investigator.

Restrictions: For Research Use only

Handling

Concentration: Lot specific

Buffer: POLR2 G antibody in PBS (3.0 mM KCl, 1.5 mM KH₂ PO₄, 140 mM NaCl, 8.0 mM Na₂ HPO₄ (pH 7.4)) containing 1 % bovine serum albumin (BSA) and 0.05 % sodium azide (NaN₃).

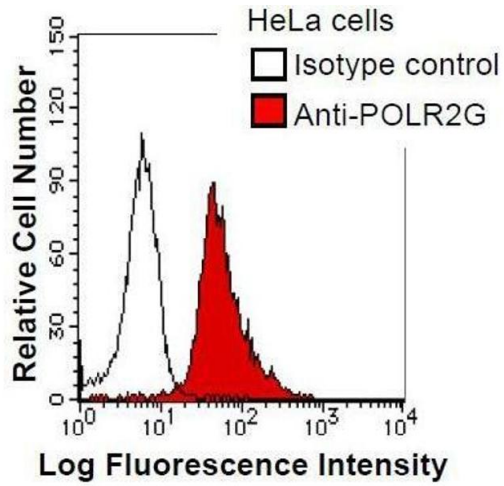
Preservative: Sodium azide

Precaution of Use: This product contains Sodium Azide: a POISONOUS AND HAZARDOUS SUBSTANCE, which should be handled by trained staff only.

Handling Advice: Avoid repeated freeze/thaw cycles.
Dilute only prior to immediate use.

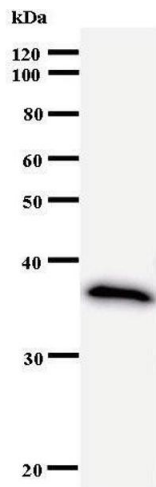
Storage: 4 °C/-20 °C

Storage Comment: Store at 2-8 °C for up to one year. We recommend long term storage at -20 °C.



Flow Cytometry

Image 1. HeLa cells were fixed in 2% paraformaldehyde/PBS and then permeabilized in 90% methanol. Cells were stained with anti-POLR2G mAb (shaded) or isotype control (unshaded) followed by Alexa Fluor 488 conjugated goat anti-mouse IgG.



Western Blotting

Image 2.