

Datasheet for ABIN933150

**anti-Nth Endonuclease III-Like 1 (NTHL1) antibody**[Go to Product page](#)**1** Image

## Overview

Quantity:	100 µg
Target:	Nth Endonuclease III-Like 1 (NTHL1)
Reactivity:	Human
Host:	Mouse
Clonality:	Monoclonal
Conjugate:	Un-conjugated
Application:	Western Blotting (WB), Dot Blot (DB)

## Product Details

Immunogen:	NTHL1 antibody was raised in mouse using recombinant Human Nth Endonuclease Iii-Like 1 (E. Coli) (Nth1)
Clone:	2660C1a
Isotype:	IgG1
Cross-Reactivity:	Human, Mouse (Murine), Rat (Rattus)
Cross-Reactivity (Details):	Other species not studied.
Purification:	Protein G affinity chromatography

## Target Details

Target:	Nth Endonuclease III-Like 1 (NTHL1)
Alternative Name:	NTHL1 ( <a href="#">NTHL1 Products</a> )

## Target Details

---

**Background:** DNA N-glycosylases, or apurinic/apyrimidinic lyases, of the endonuclease III family, such as NTHL1, initiate DNA base excision repair of oxidized ring saturated pyrimidine residues.  
Synonyms: Monoclonal NTHL1 antibody, Anti-NTHL1 antibody, Nth endonuclease III like 1 antibody, NTH1 antibody, OCTS3 antibody.

## Application Details

---

**Application Notes:** WB: 0.2-2 µg/mL  
Optimal conditions should be determined by the investigator.

**Restrictions:** For Research Use only

## Handling

---

**Concentration:** Lot specific

**Buffer:** NTHL1 antibody in PBS (3.0 mM KCl, 1.5 mM KH<sub>2</sub> PO<sub>4</sub>, 140 mM NaCl, 8.0 mM Na<sub>2</sub> HPO<sub>4</sub> (pH 7.4)) containing 1 % bovine serum albumin (BSA) and 0.05 % sodium azide (NaN<sub>3</sub>).

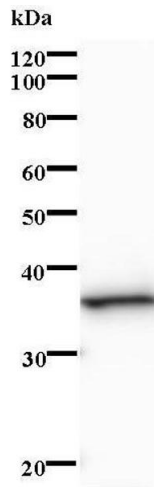
**Preservative:** Sodium azide

**Precaution of Use:** This product contains Sodium Azide: a POISONOUS AND HAZARDOUS SUBSTANCE, which should be handled by trained staff only.

**Handling Advice:** Avoid repeated freeze/thaw cycles.  
Dilute only prior to immediate use.

**Storage:** 4 °C/-20 °C

**Storage Comment:** Store at 2-8 °C for up to one year. We recommend long term storage at -20 °C.



### Western Blotting

Image 1.