

Datasheet for ABIN933151
anti-BCL3 antibody

2 Images



[Go to Product page](#)

Overview

Quantity:	50 µg
Target:	BCL3
Reactivity:	Human
Host:	Mouse
Clonality:	Monoclonal
Conjugate:	This BCL3 antibody is un-conjugated
Application:	Western Blotting (WB), Immunocytochemistry (ICC), Dot Blot (DB)

Product Details

Immunogen:	BCL3 antibody was raised in mouse using recombinant Human B-Cell CII/Lymphoma 3 (Bcl3)
Clone:	2069E2a
Isotype:	IgG1
Cross-Reactivity:	Human, Mouse (Murine), Rat (Rattus)
Cross-Reactivity (Details):	Other species not studied.
Purification:	Protein G affinity chromatography

Target Details

Target:	BCL3
Alternative Name:	BCL3 (BCL3 Products)
Background:	This gene is a proto-oncogene candidate. It is identified by its translocation into the

Target Details

immunoglobulin alpha-locus in some cases of B-cell leukemia. The protein encoded by this gene contains seven ankyrin repeats, which are most closely related to those found in I kappa B proteins. This protein functions as a transcriptional co-activator that activates through its association with NF-kappa B homodimers. The expression of this gene can be induced by NF-kappa B, which forms a part of the autoregulatory loop that controls the nuclear residence of p50 NF-kappa B. Synonyms: Monoclonal BCL3 antibody, Anti-BCL3 antibody, B-cell lymphoma 3 encoded protein antibody, BCL4 antibody, D19S37 antibody.

Pathways: [NF-kappaB Signaling](#), [Maintenance of Protein Location](#), [Protein targeting to Nucleus](#)

Application Details

Application Notes: WB: 0.2-2 µg/mL
Optimal conditions should be determined by the investigator.

Restrictions: For Research Use only

Handling

Concentration: Lot specific

Buffer: BCL3 antibody in PBS (3.0 mM KCl, 1.5 mM KH₂ PO₄, 140 mM NaCl, 8.0 mM Na₂ HPO₄ (pH 7.4)) containing 1 % bovine serum albumin (BSA) and 0.05 % sodium azide (NaN₃).

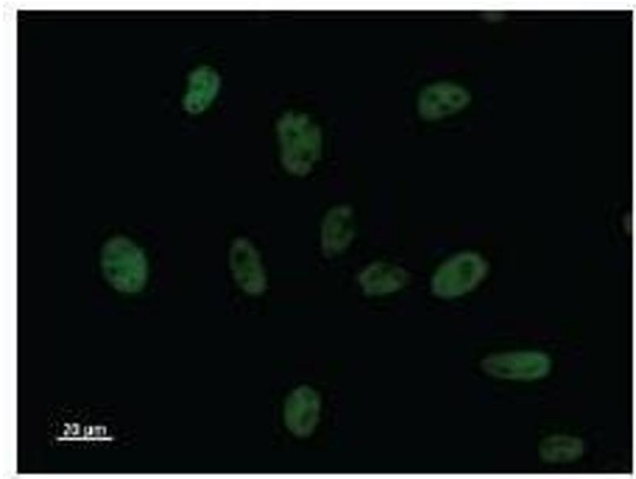
Preservative: Sodium azide

Precaution of Use: This product contains Sodium Azide: a POISONOUS AND HAZARDOUS SUBSTANCE, which should be handled by trained staff only.

Handling Advice: Avoid repeated freeze/thaw cycles.
Dilute only prior to immediate use.

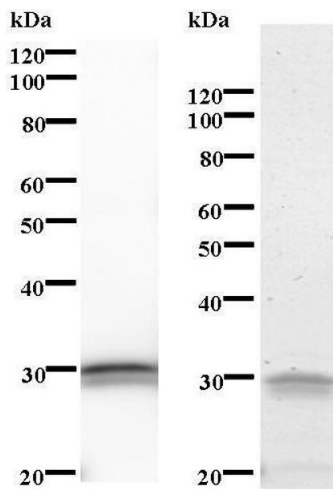
Storage: 4 °C/-20 °C

Storage Comment: Store at 2-8 °C for up to one year. We recommend long term storage at -20 °C.



Immunofluorescence

Image 1. Immunostaining analysis in HeLa cells. HeLa cells were fixed with 4% paraformaldehyde and permeabilized with 0.01% Triton-X100 in PBS. The cells were immunostained with anti-BCL3 antibody.



Western Blotting

Image 2. Left: BCL3 staining. Right: Coomassie Blue staining of immunized recombinant protein.