

Datasheet for ABIN933187
anti-STEAP1 antibody (AA 1-70)



[Go to Product page](#)

3 Images

Overview

Quantity:	100 µL
Target:	STEAP1
Binding Specificity:	AA 1-70
Reactivity:	Human
Host:	Mouse
Clonality:	Monoclonal
Conjugate:	This STEAP1 antibody is un-conjugated
Application:	Western Blotting (WB), ELISA, Immunohistochemistry (IHC), Immunofluorescence (IF)

Product Details

Immunogen:	STEAP1 antibody was raised in mouse using recombinant human STEAP1 (1-70aa) purified from E. coli as the immunogen.
Clone:	J2D2
Isotype:	IgG2b kappa
Purification:	STEAP1 antibody was purified by protein-G affinity chromatography

Target Details

Target:	STEAP1
Alternative Name:	STEAP1 (STEAP1 Products)
Pathways:	Transition Metal Ion Homeostasis

Application Details

Application Notes: IF: 1:100-1:300, IHC: 1:50-1:100, WB: 1:1,000-1:2,000

Restrictions: For Research Use only

Handling

Format: Liquid

Concentration: Lot specific

Buffer: as a liquid PBS, pH 7.4, with 0.1 % NaN₃.

Preservative: Sodium azide

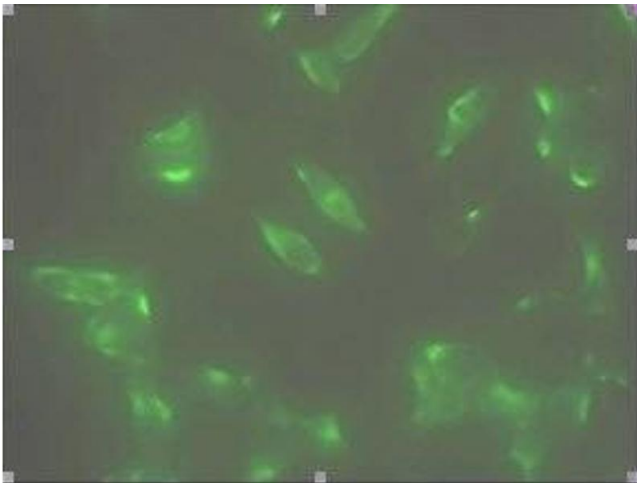
Precaution of Use: This product contains Sodium azide: a POISONOUS AND HAZARDOUS SUBSTANCE which should be handled by trained staff only.

Handling Advice: Avoid repeated freeze/thaw cycles

Storage: -20 °C

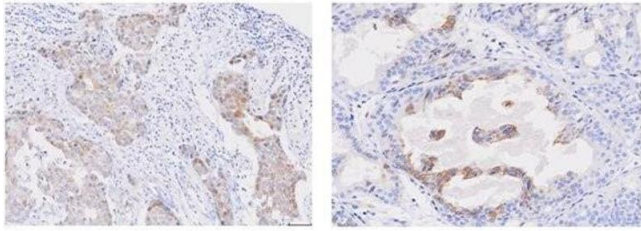
Storage Comment: Store at 4 °C for short term storage. Aliquot and store at -20 °C for long term storage.

Images



Immunofluorescence

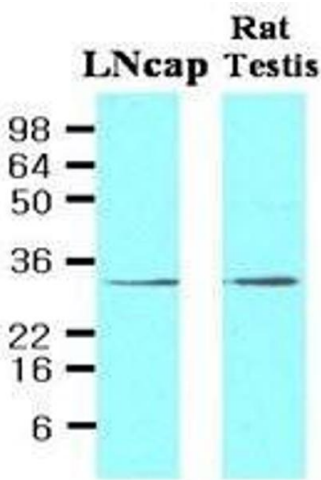
Image 1. Immunofluorescence staining of human LNCap cell colony with monoclonal anti- human STEAP1 antibody.



Human breast cancer tissue (left) and prostate hyperplasia tissue (right)

Immunohistochemistry

Image 2. Paraffin embedded sections of human breast cancer and prostate hyperplasia tissue were incubated with anti-human STEAP1 (1:50) for 2 hours at room temperature. Antigen retrieval was performed in 0.1M sodium citrate buffer and detected using Diaminobenzidine (DAB)



Western Blotting

Image 3. Cell lysates of LNCap (30ug) and Rat testis (30ug) were resolved by SDS-PAGE, transferred to NC membrane and probed with anti-human STEAP1 (1:500). Proteins were visualized using a goat anti-mouse secondary antibody conjugated to HRP and an ECL detection system.