

Datasheet for ABIN933188
anti-MYL2 antibody (AA 1-166)



[Go to Product page](#)

1 Image

Overview

| | |
|----------------------|------------------------------|
| Quantity: | 100 µL |
| Target: | MYL2 |
| Binding Specificity: | AA 1-166 |
| Reactivity: | Human |
| Host: | Mouse |
| Clonality: | Monoclonal |
| Application: | Western Blotting (WB), ELISA |

Product Details

| | |
|---------------|--|
| Immunogen: | MYL2 antibody was raised in mouse using recombinant human MYL2 (1-166aa) purified from E. coli as the immunogen. |
| Clone: | AT3B2 |
| Isotype: | IgG2b kappa |
| Purification: | MYL2 antibody was purified by protein-G affinity chromatography |

Target Details

| | |
|-------------------|---|
| Target: | MYL2 |
| Alternative Name: | MYL2 (MYL2 Products) |
| Pathways: | Myometrial Relaxation and Contraction |

Application Details

Application Notes: WB: 1:1,000-1:3,000

Restrictions: For Research Use only

Handling

Format: Liquid

Concentration: Lot specific

Buffer: as a liquid PBS, pH 7.4, with 0.1 % NaN₃.

Preservative: Sodium azide

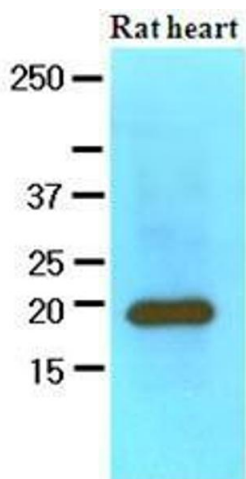
Precaution of Use: This product contains Sodium azide: a POISONOUS AND HAZARDOUS SUBSTANCE which should be handled by trained staff only.

Handling Advice: Avoid repeated freeze/thaw cycles

Storage: -20 °C

Storage Comment: Store at 4 °C for short term storage. Aliquot and store at -20 °C for long term storage.

Images



Western Blotting

Image 1. The extracts of Rat heart (60 ug) were resolved by SDS-PAGE, transferred to nitrocellulose membrane and probed with anti-human MYL2 (1:1000). Proteins were visualized using a goat anti-mouse secondary antibody conjugated to HRP and an ECL detection system.