

Datasheet for ABIN933202
anti-Hexokinase 1 antibody



[Go to Product page](#)

3 Images

Overview

Quantity:	100 µL
Target:	Hexokinase 1 (HK1)
Reactivity:	Human
Host:	Mouse
Clonality:	Monoclonal
Conjugate:	This Hexokinase 1 antibody is un-conjugated
Application:	Western Blotting (WB), ELISA, Immunohistochemistry (IHC), Immunofluorescence (IF)

Product Details

Immunogen:	HK1 antibody was raised in Mouse using a purified recombinant fragment of human HK1 expressed in E. coli as the immunogen.
Clone:	7A7
Isotype:	IgG1

Target Details

Target:	Hexokinase 1 (HK1)
Alternative Name:	HK1 (HK1 Products)
Pathways:	Carbohydrate Homeostasis , Warburg Effect

Application Details

Application Notes: ELISA: 1:10,000, IF: 1:200-1:1000, IHC: 1:200-1:1000, WB: 1:500-1:2000

Restrictions: For Research Use only

Handling

Format: Liquid

Concentration: Lot specific

Buffer: as a liquid In ascitic fluid containing 0.03 % sodium azide.

Preservative: Sodium azide

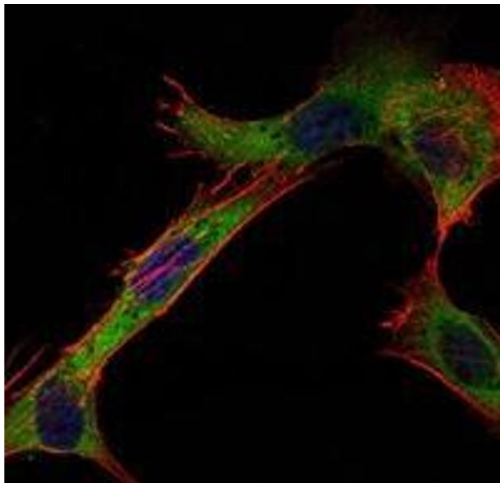
Precaution of Use: This product contains Sodium azide: a POISONOUS AND HAZARDOUS SUBSTANCE which should be handled by trained staff only.

Handling Advice: Avoid repeated freeze/thaw cycles

Storage: -20 °C

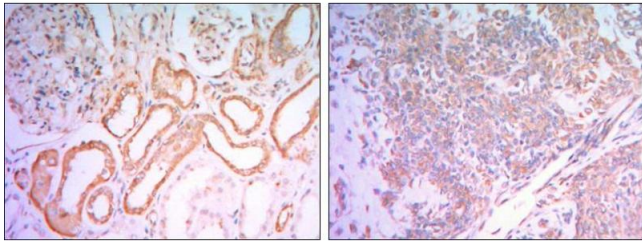
Storage Comment: Store at 4 °C for short term storage. Store at -20 °C for long term storage.

Images



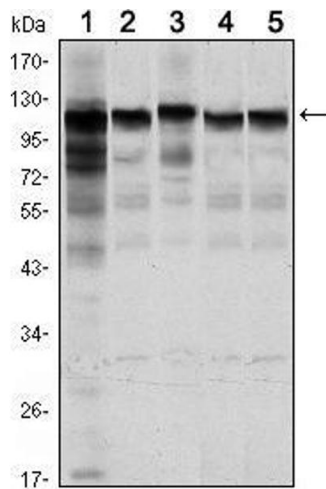
Immunofluorescence

Image 1. Immunofluorescence analysis of NIH/3T3 cells using HK1 antibody (green). Blue: DRAQ5 fluorescent DNA dye. Red: Actin filaments have been labeled with Alexa Fluor-555 phalloidin.



Immunohistochemistry

Image 2. Immunohistochemical analysis of paraffin-embedded human salivary gland tissues (left) and kidney tissues (right) using HK1 antibody with DAB staining.



Western Blotting

Image 3. Western Blot showing HK1 antibody used against Jurkat (1), HeLa (2), HepG2 (3), MCF-7 (4) and PC-12 (5) cell lysate.