

Datasheet for ABIN933571
anti-RFP antibody (N-Term)



[Go to Product page](#)

1 Image

Overview

Quantity:	100 µg
Target:	RFP
Binding Specificity:	N-Term
Reactivity:	Discosoma
Host:	Mouse
Clonality:	Monoclonal
Conjugate:	This RFP antibody is un-conjugated
Application:	Western Blotting (WB), ELISA, Immunofluorescence (IF), Immunoprecipitation (IP), Immunohistochemistry (IHC), Dot Blot (DB)

Product Details

Immunogen:	RFP Tag antibody was raised in mouse using RFP from the Discosoma sea anemone N-terminal peptide-KLH conjugates as the immunogen.
Clone:	RF5R
Isotype:	IgG1
Purification:	Protein A affinity chromatography

Target Details

Target:	RFP
Abstract:	RFP Products

Target Details

Background: Red Fluorescent Protein is a protein which exhibits bright red fluorescence when exposed to blue light. Fluorescent proteins are members of a structurally homologous class of proteins that share the unique property of being self-sufficient to form a visible wavelength chromophore from a sequence of 3 amino acids within their own polypeptide sequence. It is common research practice for biologists to introduce a gene encoding an engineered fluorescent protein into living cells and subsequently visualize the location and dynamics of the gene product using fluorescence microscopy. Synonyms: Monoclonal RFP Tag antibody, anti-RFP Tag antibody, RFP antibody, Red Fluorescent Protein antibody, RF5R antibody.

Application Details

Application Notes: WB: 1:1000-3000
Optimal conditions should be determined by the investigator.

Restrictions: For Research Use only

Handling

Format: Liquid

Concentration: Lot specific

Buffer: Supplied as a liquid in 10 mM PBS, pH 7.2, with 0.05 % NaN₃

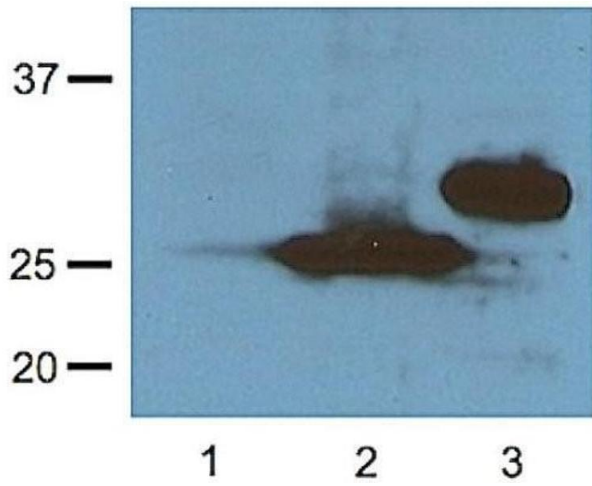
Preservative: Sodium azide

Precaution of Use: This product contains Sodium Azide: a POISONOUS AND HAZARDOUS SUBSTANCE, which should be handled by trained staff only.

Handling Advice: Avoid repeated freeze/thaw cycles.
Dilute only prior to immediate use.

Storage: 4 °C/-20 °C

Storage Comment: Store at 4 °C for several days to weeks. Add 0.1 % NaN₃ and store at -20 °C for longer periods.



Western Blotting

Image 1. 1:1000 (1 ug/ml) antibody dilution probed against HEK 293 cells transfected with RFP vector; untransfected control (1), transfected with TurboRFP (2) and transfected with dsRed (3)