

Datasheet for ABIN933711
anti-NCR1 antibody (AA 22-255)



[Go to Product page](#)

1 Image

Overview

Quantity:	100 µL
Target:	NCR1
Binding Specificity:	AA 22-255
Reactivity:	Human
Host:	Mouse
Clonality:	Monoclonal
Conjugate:	This NCR1 antibody is un-conjugated
Application:	Western Blotting (WB), ELISA, Flow Cytometry (FACS)

Product Details

Immunogen:	NKp46 antibody was raised in mouse using recombinant human Nkp46 (22-255aa) purified from E. coli as the immunogen.
Clone:	N1D9
Isotype:	IgG1 kappa
Purification:	NKp46 antibody was purified by protein-G affinity chromatography

Target Details

Target:	NCR1
Alternative Name:	NKp46 (NCR1 Products)
Pathways:	Regulation of Leukocyte Mediated Immunity

Application Details

Application Notes: To be determined by end-user.

Restrictions: For Research Use only

Handling

Format: Liquid

Concentration: Lot specific

Buffer: as a liquid PBS, pH 7.4, with 0.1 % NaN₃.

Preservative: Sodium azide

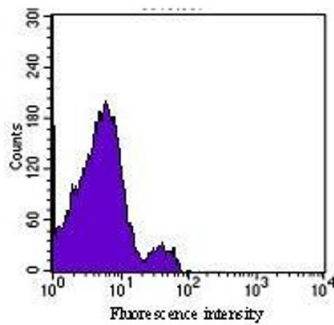
Precaution of Use: This product contains Sodium azide: a POISONOUS AND HAZARDOUS SUBSTANCE which should be handled by trained staff only.

Handling Advice: Avoid repeated freeze/thaw cycles

Storage: -20 °C

Storage Comment: Store at 4 °C for short term storage. Aliquot and store at -20 °C for long term storage.

Images



Profile of PBMC analyzed by flow

Flow Cytometry

Image 1.