

Datasheet for ABIN933712
anti-RASSF1 antibody (AA 1-340)



[Go to Product page](#)

2 Images

Overview

Quantity:	100 µL
Target:	RASSF1
Binding Specificity:	AA 1-340
Reactivity:	Human
Host:	Mouse
Clonality:	Monoclonal
Conjugate:	This RASSF1 antibody is un-conjugated
Application:	Western Blotting (WB), ELISA, Immunofluorescence (IF)

Product Details

Immunogen:	RASSF1A antibody was raised in mouse using recombinant human RASSF1A (1-340aa) purified from E. coli as the immunogen.
Clone:	3F3
Isotype:	IgG1 kappa
Purification:	RASSF1A antibody was purified by protein-G affinity chromatography

Target Details

Target:	RASSF1
Alternative Name:	RASSF1A (RASSF1 Products)

Application Details

Application Notes: WB: 1:500-1:2000

Restrictions: For Research Use only

Handling

Format: Liquid

Concentration: Lot specific

Buffer: as a liquid PBS, pH 7.4, with 0.1 % NaN₃.

Preservative: Sodium azide

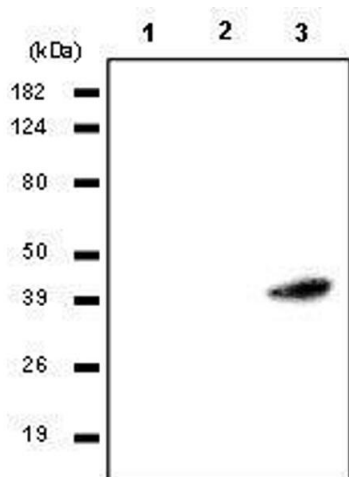
Precaution of Use: This product contains Sodium azide: a POISONOUS AND HAZARDOUS SUBSTANCE which should be handled by trained staff only.

Handling Advice: Avoid repeated freeze/thaw cycles

Storage: -20 °C

Storage Comment: Store at 4 °C for short term storage. Aliquot and store at -20 °C for long term storage.

Images



Western Blotting

Image 1. Cell lysates of HEK293(1), A549(2) and HeLa(3) were resolved by SDS-PAGE, transferred to PVDF membrane and probed with anti-human RASSF1A (1:1000). Proteins were visualized using a goat anti-mouse secondary antibody conjugated to HRP and an ECL detection system.

Immunofluorescence

Image 2. A431 cells were labeled with anti-RASSF1A (clone 3F3) mAb, and detection was using a biotinylated secondary antibody and Texas-red conj streptavidin.

