

Datasheet for ABIN933721  
**anti-PIN1 antibody (AA 1-163)**



[Go to Product page](#)

1 Image

## Overview

Quantity:	100 µL
Target:	PIN1
Binding Specificity:	AA 1-163
Reactivity:	Human
Host:	Mouse
Clonality:	Monoclonal
Conjugate:	This PIN1 antibody is un-conjugated
Application:	Western Blotting (WB), ELISA

## Product Details

Immunogen:	Pin1 antibody was raised in mouse using recombinant human Pin1 (1-163aa) purified from E. coli as the immunogen.
Clone:	3G8
Isotype:	IgG1 kappa
Purification:	Pin1 antibody was purified by protein-G affinity chromatography

## Target Details

Target:	PIN1
Alternative Name:	Pin1 ( <a href="#">PIN1 Products</a> )

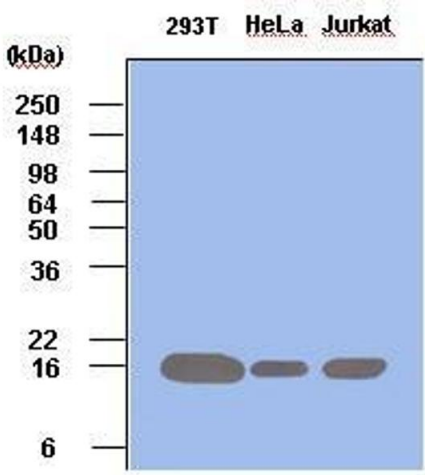
## Application Details

Application Notes:	WB: 1:500-1:1000
Restrictions:	For Research Use only

## Handling

Format:	Liquid
Concentration:	Lot specific
Buffer:	as a liquid PBS, pH 7.4, with 0.1 % NaN <sub>3</sub> .
Preservative:	Sodium azide
Precaution of Use:	This product contains Sodium azide: a POISONOUS AND HAZARDOUS SUBSTANCE which should be handled by trained staff only.
Handling Advice:	Avoid repeated freeze/thaw cycles
Storage:	-20 °C
Storage Comment:	Store at 4 °C for short term storage. Aliquot and store at -20 °C for long term storage.

## Images



### Western Blotting

**Image 1.** Cell lysates of 293T, HeLa and Jurkat (each 50 ug) were resolved by SDS-PAGE, transferred to PVDF membrane and probed with anti-human Pin1 (1:500). Proteins were visualized using a goat anti-mouse secondary antibody conjugated to HRP and an ECL detection system.