

Datasheet for ABIN933728
anti-Clusterin antibody (AA 1-333)



[Go to Product page](#)

2 Images

Overview

Quantity:	100 µL
Target:	Clusterin (CLU)
Binding Specificity:	AA 1-333
Reactivity:	Human
Host:	Mouse
Clonality:	Monoclonal
Conjugate:	This Clusterin antibody is un-conjugated
Application:	Western Blotting (WB), Immunohistochemistry (IHC), ELISA

Product Details

Immunogen:	Clusterin antibody was raised in mouse using recombinant human Clusterin (1-333aa) purified from E. coli as the immunogen.
Clone:	1A11
Isotype:	IgG1 kappa
Purification:	Clusterin antibody was purified by protein-G affinity chromatography

Target Details

Target:	Clusterin (CLU)
Alternative Name:	Clusterin (CLU Products)
Pathways:	Apoptosis , Negative Regulation of intrinsic apoptotic Signaling

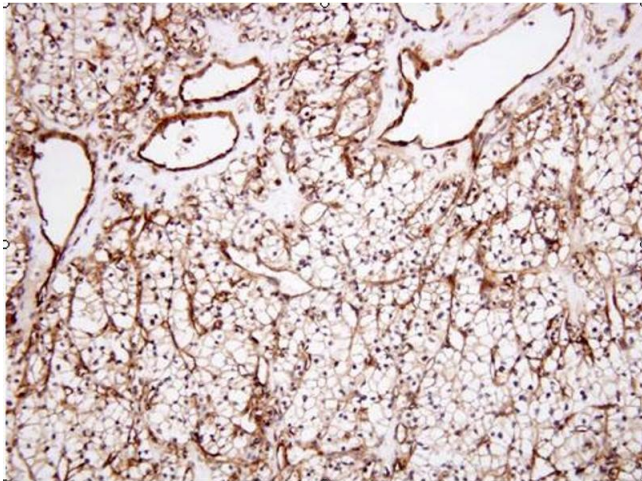
Application Details

Application Notes:	IHC: 1:100-1:200, WB: 1:500-1:2,000
Restrictions:	For Research Use only

Handling

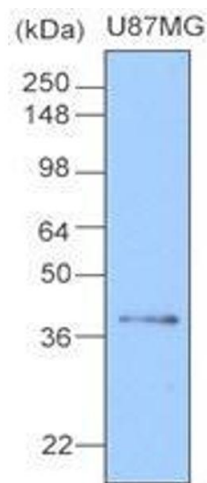
Format:	Liquid
Concentration:	Lot specific
Buffer:	as a liquid PBS, pH 7.4, with 0.1 % NaN ₃ .
Preservative:	Sodium azide
Precaution of Use:	This product contains Sodium azide: a POISONOUS AND HAZARDOUS SUBSTANCE which should be handled by trained staff only.
Handling Advice:	Avoid repeated freeze/thaw cycles
Storage:	-20 °C
Storage Comment:	Store at 4 °C for short term storage. Aliquot and store at -20 °C for long term storage.

Images



Immunohistochemistry

Image 1. Paraffin embedded sections of human renal cell carcinoma tissue were incubated with anti-human Clusterin (1:100) for 2 hours at room temperature. Antigen retrieval was performed in 0.1M sodium citrate buffer and detected using Diaminobenzidine (DAB)



Western Blotting

Image 2. Cell lysates of U87MG(20 ug) were resolved by SDS-PAGE, transferred to nitrocellulose membrane and probed with anti-human Clusterin (1:1000). Proteins were visualized using a goat anti-mouse secondary antibody conjugated to HRP and an ECL detection system.