

Datasheet for ABIN933745
anti-PPM1G antibody (AA 317-546)



[Go to Product page](#)

2 Images

Overview

Quantity:	100 µL
Target:	PPM1G
Binding Specificity:	AA 317-546
Reactivity:	Human
Host:	Mouse
Clonality:	Monoclonal
Conjugate:	This PPM1G antibody is un-conjugated
Application:	Western Blotting (WB), ELISA, Immunohistochemistry (IHC)

Product Details

Immunogen:	PPM1G antibody was raised in mouse using recombinant human PPM1G (317-546aa) purified from E. coli as the immunogen.
Clone:	K1G6
Isotype:	IgG1 kappa
Purification:	PPM1G antibody was purified by protein-G affinity chromatography

Target Details

Target:	PPM1G
Alternative Name:	PPM1G (PPM1G Products)

Application Details

Application Notes: IHC: 1:50-1:100, WB: 1:1,000-1:2,000

Restrictions: For Research Use only

Handling

Format: Liquid

Concentration: Lot specific

Buffer: In liquid form in PBS, pH 7.4, containing 10 % Glycerol, 0.01 % Sodium Azide

Preservative: Sodium azide

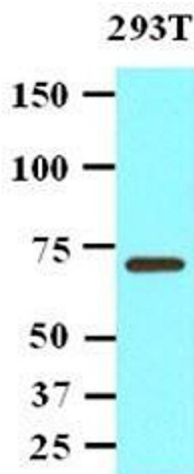
Precaution of Use: This product contains Sodium azide: a POISONOUS AND HAZARDOUS SUBSTANCE which should be handled by trained staff only.

Handling Advice: Avoid repeated freeze/thaw cycles

Storage: -20 °C

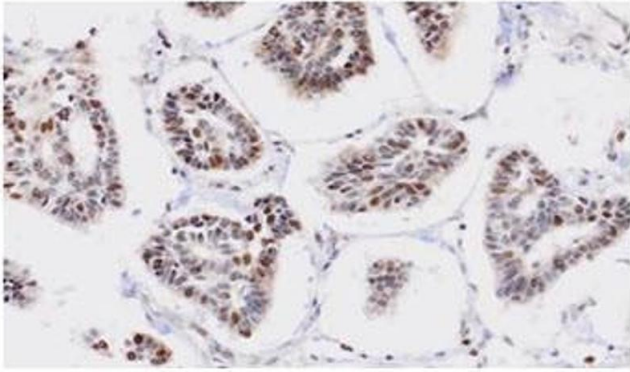
Storage Comment: Store at 4 °C for short term storage. Aliquot and store at -20 °C for long term storage.

Images



Western Blotting

Image 1. Cell lysates of 293T(20 ug) were resolved by SDS-PAGE, transferred to nitrocellulose membrane and probed with anti-human PPM1G (1:1,000). Proteins were visualized using a goat anti-mouse secondary antibody conjugated to HRP and an ECL detection system.



Human breast cancer tissue

Immunohistochemistry

Image 2. Paraffin embedded sections of human breast cancer tissue were immunohistochemically stained with anti-human PPM1G (1:50) for 2 hours at room temperature. Antigen retrieval was performed in 0.1M sodium citrate buffer and detected using Diaminobenzidine (DAB)