

Datasheet for ABIN933755  
**anti-LITAF antibody (AA 1-161)**



[Go to Product page](#)

1 Image

## Overview

Quantity:	100 µL
Target:	LITAF
Binding Specificity:	AA 1-161
Reactivity:	Human
Host:	Mouse
Clonality:	Monoclonal
Conjugate:	This LITAF antibody is un-conjugated
Application:	Western Blotting (WB), ELISA

## Product Details

Immunogen:	LITAF antibody was raised in mouse using recombinant human LITAF (1-161 aa) purified from E. coli as the immunogen.
Clone:	AT1F9
Isotype:	IgG1 kappa
Purification:	LITAF antibody was purified by protein-G affinity chromatography

## Target Details

Target:	LITAF
Alternative Name:	LITAF ( <a href="#">LITAF Products</a> )
Pathways:	<a href="#">Cellular Response to Molecule of Bacterial Origin</a>

## Application Details

Application Notes: WB: 1:200-500

Restrictions: For Research Use only

## Handling

Format: Liquid

Concentration: Lot specific

Buffer: as a liquid PBS, pH 7.4, with 0.1 % NaN<sub>3</sub>.

Preservative: Sodium azide

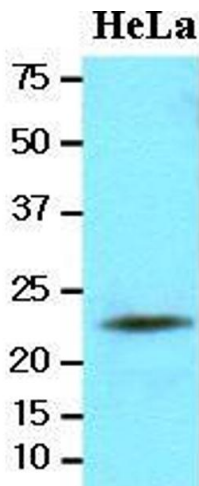
Precaution of Use: This product contains Sodium azide: a POISONOUS AND HAZARDOUS SUBSTANCE which should be handled by trained staff only.

Handling Advice: Avoid repeated freeze/thaw cycles

Storage: -20 °C

Storage Comment: Store at 4 °C for short term storage. Aliquot and store at -20 °C for long term storage.

## Images



### Western Blotting

**Image 1.** Cell lysates of HeLa(20 ug) were resolved by SDS-PAGE, transferred to nitrocellulose membrane and probed with anti-human LITAF (1:2000). Proteins were visualized using a goat anti-mouse secondary antibody conjugated to HRP and an ECL detection system.