

Datasheet for ABIN933756
anti-BRCC3 antibody (AA 1-316)



[Go to Product page](#)

1 Image

Overview

Quantity:	100 µL
Target:	BRCC3
Binding Specificity:	AA 1-316
Reactivity:	Human
Host:	Mouse
Clonality:	Monoclonal
Conjugate:	This BRCC3 antibody is un-conjugated
Application:	Western Blotting (WB), ELISA

Product Details

Immunogen:	BRCC36 antibody was raised in mouse using recombinant BRCC36 (1-316aa) purified from E. coli as the immunogen.
Clone:	AT3B1
Isotype:	IgG1 kappa
Purification:	BRCC36 antibody was purified by protein-G affinity chromatography

Target Details

Target:	BRCC3
Alternative Name:	BRCC36 (BRCC3 Products)
Pathways:	Positive Regulation of Response to DNA Damage Stimulus

Application Details

Application Notes: WB: 1:1,000-1:2,000

Restrictions: For Research Use only

Handling

Format: Liquid

Concentration: Lot specific

Buffer: as a liquid PBS, pH 7.4, with 0.1 % NaN₃.

Preservative: Sodium azide

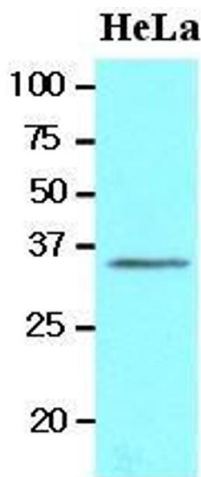
Precaution of Use: This product contains Sodium azide: a POISONOUS AND HAZARDOUS SUBSTANCE which should be handled by trained staff only.

Handling Advice: Avoid repeated freeze/thaw cycles

Storage: -20 °C

Storage Comment: Store at 4 °C for short term storage. Aliquot and store at -20 °C for long term storage.

Images



Western Blotting

Image 1. Cell lysates of HeLa(20 ug) were resolved by SDS-PAGE, transferred to nitrocellulose membrane and probed with anti-human BRCC36 (1:1000). Proteins were visualized using a goat anti-mouse secondary antibody conjugated to HRP and an ECL detection system.