

Datasheet for ABIN933760
anti-NAT6 antibody (AA 1-308)



[Go to Product page](#)

2 Images

Overview

Quantity:	100 µL
Target:	NAT6
Binding Specificity:	AA 1-308
Reactivity:	Human
Host:	Mouse
Clonality:	Monoclonal
Conjugate:	This NAT6 antibody is un-conjugated
Application:	Western Blotting (WB), ELISA, Immunofluorescence (IF)

Product Details

Immunogen:	FUS2 antibody was raised in mouse using recombinant FUS2 (1-308aa) purified from E. coli as the immunogen.
Clone:	AT2F4
Isotype:	IgG1 kappa
Purification:	FUS2 antibody was purified by protein-G affinity chromatography

Target Details

Target:	NAT6
Alternative Name:	FUS2 (NAT6 Products)

Application Details

Application Notes: IF: 1:500-1:1,000

Restrictions: For Research Use only

Handling

Format: Liquid

Concentration: Lot specific

Buffer: as a liquid PBS, pH 7.4, with 0.1 % NaN₃.

Preservative: Sodium azide

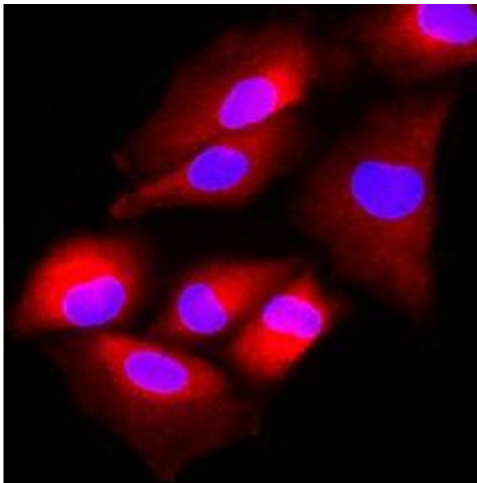
Precaution of Use: This product contains Sodium azide: a POISONOUS AND HAZARDOUS SUBSTANCE which should be handled by trained staff only.

Handling Advice: Avoid repeated freeze/thaw cycles

Storage: -20 °C

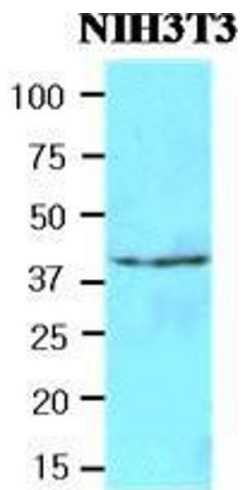
Storage Comment: Store at 4 °C for short term storage. Aliquot and store at -20 °C for long term storage.

Images



Immunofluorescence

Image 1. Immunofluorescencitrocellulosee of human A549 cells stained with Hoechst 33342 (Blue) and monoclonal anti-human FUS2 antibody (1:500) with Texas Red (red).



Western Blotting

Image 2. Cell lysates of NIH3T3(40 ug) were resolved by SDS-PAGE, transferred to nitrocellulose membrane and probed with anti-human FUS2 (1:500). Proteins were visualized using a goat anti-mouse secondary antibody conjugated to HRP and an ECL detection system.