

Datasheet for ABIN933872 **anti-MAPRE3 antibody**

2 Images



[Go to Product page](#)

Overview

Quantity:	100 µg
Target:	MAPRE3
Reactivity:	Human
Host:	Rat
Clonality:	Monoclonal
Application:	Immunofluorescence (IF)

Product Details

Immunogen:	EB3 antibody was raised in Rat using Human EB3 fused to GST as the immunogen.
Clone:	KT36
Isotype:	IgG2a
Purification:	Protein G affinity chromatography

Target Details

Target:	MAPRE3
Alternative Name:	EB3 (MAPRE3 Products)
Background:	EB3 protein localizes to the cytoplasmic microtubule network and binds APCL, a homolog of the adenomatous polyposis coli tumor suppressor gene. Synonyms: Monoclonal EB3 antibody, Anti-EB3 antibody, EB 3 antibody, EB-3 antibody, EB1 protein family member 3 antibody, End binding protein 3 antibody.

Application Details

Application Notes: IF: 1:100-1:1000
Optimal conditions should be determined by the investigator.

Restrictions: For Research Use only

Handling

Concentration: Lot specific

Buffer: Supplied in PBS containing 0.1 % sodium azide as a preservative

Preservative: Sodium azide

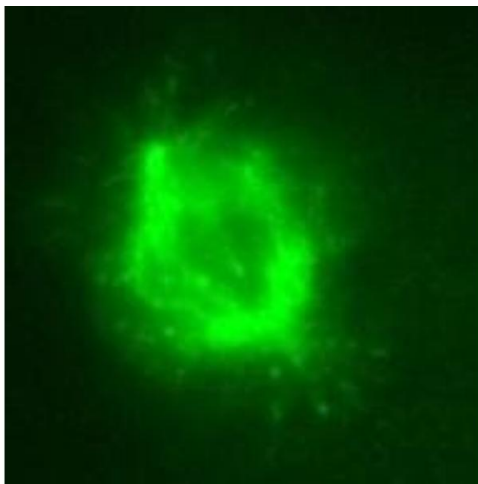
Precaution of Use: This product contains Sodium Azide: a POISONOUS AND HAZARDOUS SUBSTANCE, which should be handled by trained staff only.

Handling Advice: Avoid repeated freeze/thaw cycles.
Dilute only prior to immediate use.

Storage: -20 °C/-80 °C

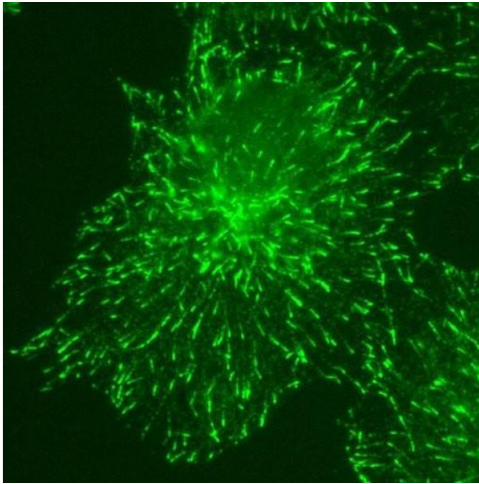
Storage Comment: Store at 4 °C for up to 1 month. For long term storage, aliquot and store at -20 to -80 °C.

Images



Immunofluorescence

Image 1. KT36 immunofluorescent staining for cell mitosis.



Immunofluorescence

Image 2. KT36 immunofluorescent staining for EB3 over expressed COS7 cells.