

Datasheet for ABIN933927
anti-KIR2DL3 antibody (AA 19-161)



[Go to Product page](#)

1 Image

Overview

Quantity:	100 µL
Target:	KIR2DL3
Binding Specificity:	AA 19-161
Reactivity:	Human
Host:	Mouse
Clonality:	Monoclonal
Application:	Western Blotting (WB), ELISA, Flow Cytometry (FACS)

Product Details

Immunogen:	KIR2DL3 antibody was raised in mouse using recombinant human KIR2DL3(19-161aa) purified from E. coli as the immunogen.
Clone:	190IIC311
Isotype:	IgG2a kappa
Purification:	KIR2DL3 antibody was purified by protein-G affinity chromatography

Target Details

Target:	KIR2DL3
Alternative Name:	KIR2DL3 (KIR2DL3 Products)
Pathways:	Cancer Immune Checkpoints

Application Details

Application Notes: To be determined by end-user.

Restrictions: For Research Use only

Handling

Format: Liquid

Concentration: Lot specific

Buffer: as a liquid PBS, pH 7.4, with 0.1 % NaN₃.

Preservative: Sodium azide

Precaution of Use: This product contains Sodium azide: a POISONOUS AND HAZARDOUS SUBSTANCE which should be handled by trained staff only.

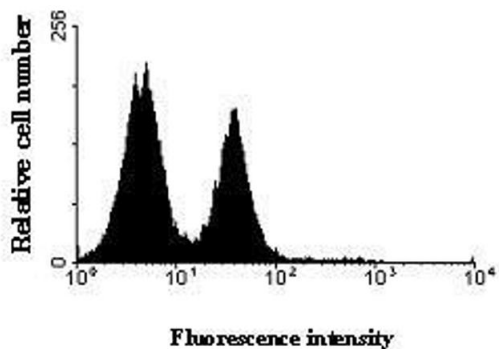
Handling Advice: Avoid repeated freeze/thaw cycles

Storage: -20 °C

Storage Comment: Store at 4 °C for short term storage. Aliquot and store at -20 °C for long term storage.

Images

Profile of NK cells analyzed by flow



Flow Cytometry

Image 1.