

Datasheet for ABIN933929
anti-KIR2DL1 antibody (AA 23-223)



[Go to Product page](#)

1 Image

Overview

| | |
|----------------------|--|
| Quantity: | 100 µL |
| Target: | KIR2DL1 |
| Binding Specificity: | AA 23-223 |
| Reactivity: | Human |
| Host: | Mouse |
| Clonality: | Monoclonal |
| Conjugate: | This KIR2DL1 antibody is un-conjugated |
| Application: | Western Blotting (WB), ELISA, Immunoprecipitation (IP) |

Product Details

| | |
|---------------|--|
| Immunogen: | KIR2DL1 antibody was raised in mouse using recombinant human KIR2DL1 (23-223 aa) purified from E. coli as the immunogen. |
| Clone: | 2F9 |
| Isotype: | IgG2a kappa |
| Purification: | KIR2DL1 antibody was purified by protein-G affinity chromatography |

Target Details

| | |
|-------------------|--|
| Target: | KIR2DL1 |
| Alternative Name: | KIR2DL1 (KIR2DL1 Products) |

Application Details

Application Notes: WB: 1:500-1:2000

Restrictions: For Research Use only

Handling

Format: Liquid

Concentration: Lot specific

Buffer: as a liquid PBS, pH 7.4, with 0.1 % NaN₃.

Preservative: Sodium azide

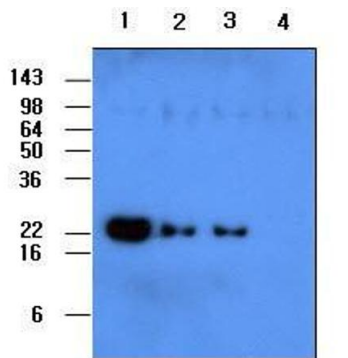
Precaution of Use: This product contains Sodium azide: a POISONOUS AND HAZARDOUS SUBSTANCE which should be handled by trained staff only.

Handling Advice: Avoid repeated freeze/thaw cycles

Storage: -20 °C

Storage Comment: Store at 4 °C for short term storage. Aliquot and store at -20 °C for long term storage.

Images



Lane 1 : KIR2DL1 Lane 2 : KIR2DL3
Lane 3 : KIR2DS4 Lane 4 : KIR2DL4

Western Blotting

Image 1. Recombinant human protein KIR2DL1, KIR2DL3, KIR2DS4 and KIR2DL4 (each 50ng per well) were resolved by SDS-PAGE, transferred to PVDF membrane and probed with anti-human KIR2DL1 (1:500). Proteins were visualized using a goat anti-mouse secondary antibody conjugated to HRP and an ECL detection system.