

Datasheet for ABIN933933
anti-PPP1CA antibody (AA 30-299)



[Go to Product page](#)

1 Image

Overview

Quantity:	100 µL
Target:	PPP1CA
Binding Specificity:	AA 30-299
Reactivity:	Human
Host:	Mouse
Clonality:	Monoclonal
Conjugate:	This PPP1CA antibody is un-conjugated
Application:	Western Blotting (WB), ELISA

Product Details

Immunogen:	PPP1CA antibody was raised in mouse using recombinant human PPP1CA (30-299aa) purified from E. coli as the immunogen.
Clone:	4G3
Isotype:	IgG2a kappa
Purification:	PPP1CA antibody was purified by protein-G affinity chromatography

Target Details

Target:	PPP1CA
Alternative Name:	PPP1CA (PPP1CA Products)
Pathways:	M Phase , Cellular Glucan Metabolic Process , Regulation of Carbohydrate Metabolic Process ,

Target Details

Lipid Metabolism

Application Details

Application Notes: WB: 1:500-1:2000

Restrictions: For Research Use only

Handling

Format: Liquid

Concentration: Lot specific

Buffer: as a liquid PBS, pH 7.4, with 0.1 % NaN₃.

Preservative: Sodium azide

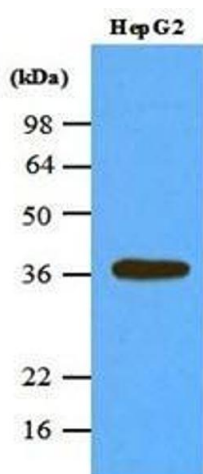
Precaution of Use: This product contains Sodium azide: a POISONOUS AND HAZARDOUS SUBSTANCE which should be handled by trained staff only.

Handling Advice: Avoid repeated freeze/thaw cycles

Storage: -20 °C

Storage Comment: Store at 4 °C for short term storage. Aliquot and store at -20 °C for long term storage.

Images



Western Blotting

Image 1. Cell lysates of HepG2 (45 ug) were resolved by SDS-PAGE, transferred to nitrocellulose membrane and probed with anti-human PPP1CA (1:1000). Proteins were visualized using a goat anti-mouse secondary antibody conjugated to HRP and an ECL detection system.