

Datasheet for ABIN933939

**anti-NFATC1 antibody (AA 428-716)**[Go to Product page](#)**1** Image

## Overview

Quantity:	100 µL
Target:	NFATC1
Binding Specificity:	AA 428-716
Reactivity:	Human
Host:	Mouse
Clonality:	Monoclonal
Conjugate:	This NFATC1 antibody is un-conjugated
Application:	Western Blotting (WB), ELISA

## Product Details

Immunogen:	NFATc1 antibody was raised in mouse using recombinant human NFATc1 (428-716aa) purified from E. coli as the immunogen.
Clone:	AT1C3
Isotype:	IgG2a kappa
Purification:	NFATc1 antibody was purified by protein-G affinity chromatography

## Target Details

Target:	NFATC1
Alternative Name:	NFATc1 ( <a href="#">NFATC1 Products</a> )
Pathways:	<a href="#">RTK Signaling</a> , <a href="#">WNT Signaling</a> , <a href="#">Fc-epsilon Receptor Signaling Pathway</a>

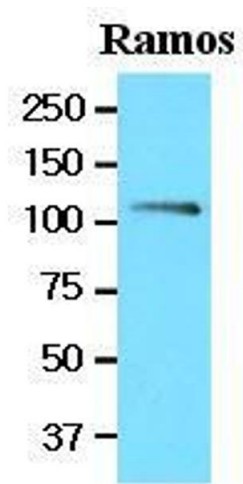
## Application Details

Application Notes:	WB: 1:1,000-1:3,000
Restrictions:	For Research Use only

## Handling

Format:	Liquid
Concentration:	Lot specific
Buffer:	as a liquid PBS, pH 7.4, with 0.1 % NaN <sub>3</sub> .
Preservative:	Sodium azide
Precaution of Use:	This product contains Sodium azide: a POISONOUS AND HAZARDOUS SUBSTANCE which should be handled by trained staff only.
Handling Advice:	Avoid repeated freeze/thaw cycles
Storage:	-20 °C
Storage Comment:	Store at 4 °C for short term storage. Aliquot and store at -20 °C for long term storage.

## Images



**Western Blotting**

**Image 1.** Cell lysates of Ramos (20 ug) were resolved by SDS-PAGE, transferred to nitrocellulose membrane and probed with anti-human NFATc1 (1:1000). Proteins were visualized using a goat anti-mouse secondary antibody conjugated to HRP and an ECL detection system.