

Datasheet for ABIN933943
anti-KAT2A antibody (AA 411-837)



[Go to Product page](#)

2 Images

Overview

Quantity:	100 µL
Target:	KAT2A
Binding Specificity:	AA 411-837
Reactivity:	Human
Host:	Mouse
Clonality:	Monoclonal
Conjugate:	This KAT2A antibody is un-conjugated
Application:	Western Blotting (WB), ELISA, Immunofluorescence (IF)

Product Details

Immunogen:	GCN5L2 antibody was raised in mouse using recombinant human GCN5L2 (411-837aa) purified from E. coli as the immunogen.
Clone:	AT3G13
Isotype:	IgG2a kappa
Purification:	GCN5L2 antibody was purified by protein-G affinity chromatography

Target Details

Target:	KAT2A
Alternative Name:	GCN5L2 (KAT2A Products)
Pathways:	Chromatin Binding, Tube Formation

Application Details

Application Notes: IF: 1:250-1:500, WB: 1:250-1:500 The antibody has been tested by ELISA, Western blot and Immunofluorescence analysis to assure specificity and reactivity. Each experiment should be titrated by the reagent to obtain optimal results. Recommended dilution range for Western blot analysis and Immunofluorescence is 1:250 ~ 500. Recommended starting dilution is 1:250

Restrictions: For Research Use only

Handling

Format: Liquid

Concentration: Lot specific

Buffer: as a liquid PBS, pH 7.4, with 0.1 % NaN₃.

Preservative: Sodium azide

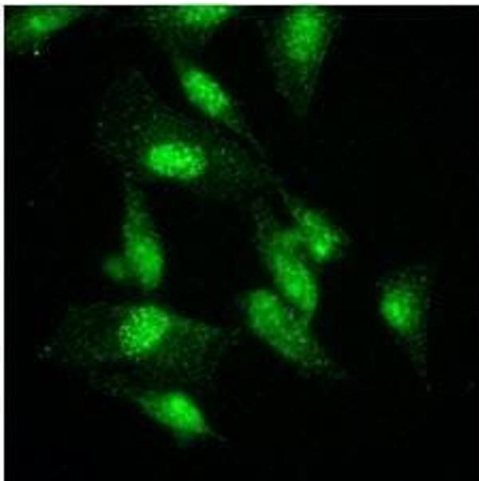
Precaution of Use: This product contains Sodium azide: a POISONOUS AND HAZARDOUS SUBSTANCE which should be handled by trained staff only.

Handling Advice: Avoid repeated freeze/thaw cycles

Storage: -20 °C

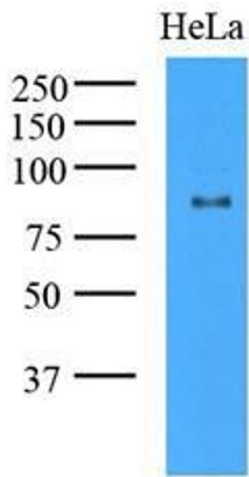
Storage Comment: Store at 4 °C for short term storage. Aliquot and store at -20 °C for long term storage.

Images



Immunofluorescence

Image 1. Immunofluorescence of HeLa cells were stained by monoclonal anti-human GCN5L2 antibody (1:500) with Alexa 488 (Green).



Western Blotting

Image 2. Cell lysates of HeLa (35 ug) were resolved by SDS-PAGE, transferred to nitrocellulose membrane and probed with anti-human GCN5L2 (1:1000). Proteins were visualized using a goat anti-mouse secondary antibody conjugated to HRP and an ECL detection system.