

Datasheet for ABIN933944  
**anti-TUBB2B antibody (AA 1-445)**



[Go to Product page](#)

2 Images

## Overview

Quantity:	100 µL
Target:	TUBB2B
Binding Specificity:	AA 1-445
Reactivity:	Human
Host:	Mouse
Clonality:	Monoclonal
Conjugate:	This TUBB2B antibody is un-conjugated
Application:	Western Blotting (WB), Immunofluorescence (IF), ELISA

## Product Details

Immunogen:	TUBB2b antibody was raised in mouse using recombinant human TUBB2b (1-445aa) purified from E. coli as the immunogen.
Clone:	AT5B3
Isotype:	IgG2a kappa
Purification:	TUBB2b antibody was purified by protein-G affinity chromatography

## Target Details

Target:	TUBB2B
Alternative Name:	TUBB2b ( <a href="#">TUBB2B Products</a> )
Pathways:	<a href="#">Microtubule Dynamics</a>

## Application Details

Application Notes: IF: 1:250-1:500, WB: 1:250-1:500

Restrictions: For Research Use only

## Handling

Format: Liquid

Concentration: Lot specific

Buffer: as a liquid PBS, pH 7.4, with 0.1 % NaN<sub>3</sub>.

Preservative: Sodium azide

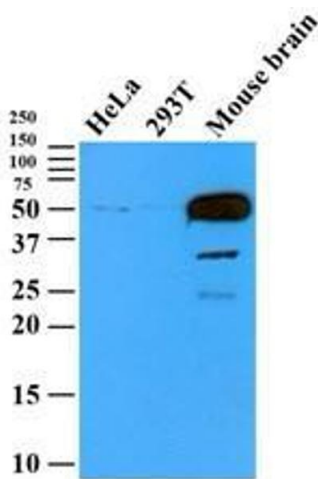
Precaution of Use: This product contains Sodium azide: a POISONOUS AND HAZARDOUS SUBSTANCE which should be handled by trained staff only.

Handling Advice: Avoid repeated freeze/thaw cycles

Storage: -20 °C

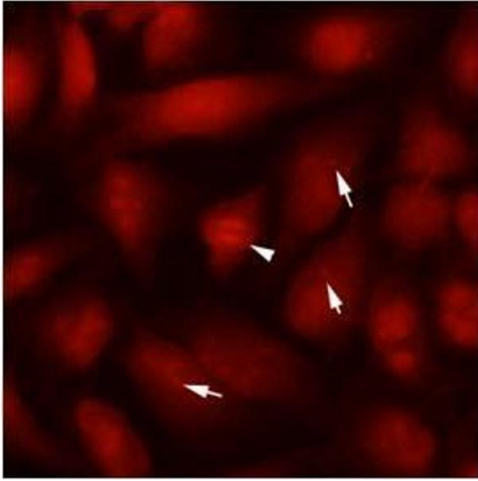
Storage Comment: Store at 4 °C for short term storage. Aliquot and store at -20 °C for long term storage.

## Images



### Western Blotting

**Image 1.** Cell lysates (35 ug) were resolved by SDS-PAGE, transferred to PVDF membrane and probed with anti-human TUBB2b (1:500). Proteins were visualized using a goat anti-mouse secondary antibody conjugated to HRP and an ECL detection system.



### Immunofluorescence

**Image 2.** Immunofluorescence of human SW480 cells stained with monoclonal anti-human TUBB2b antibody (1:250) with Texas Red (Red). Arrow head: Mitotic cell, Arrow: MTOC (microtubule organizing center).