

Datasheet for ABIN934013
anti-TPD52L1 antibody (AA 1-131)



[Go to Product page](#)

1 Image

Overview

Quantity:	100 µL
Target:	TPD52L1
Binding Specificity:	AA 1-131
Reactivity:	Human
Host:	Mouse
Clonality:	Monoclonal
Conjugate:	This TPD52L1 antibody is un-conjugated
Application:	Western Blotting (WB), ELISA, Immunohistochemistry (IHC)

Product Details

Immunogen:	TPD52L1 antibody was raised in mouse using recombinant human TPD52L1 (1-131aa) purified from E. Coli as the immunogen.
Clone:	D1D5
Isotype:	IgG2b kappa
Purification:	TPD52L1 antibody was purified by protein-G affinity chromatography

Target Details

Target:	TPD52L1
Alternative Name:	TPD52L1 (TPD52L1 Products)
Pathways:	Positive Regulation of Endopeptidase Activity

Application Details

Application Notes: WB: 1:500-1:3000

Restrictions: For Research Use only

Handling

Format: Liquid

Concentration: Lot specific

Buffer: as a liquid PBS, pH 7.4, with 0.1 % NaN₃.

Preservative: Sodium azide

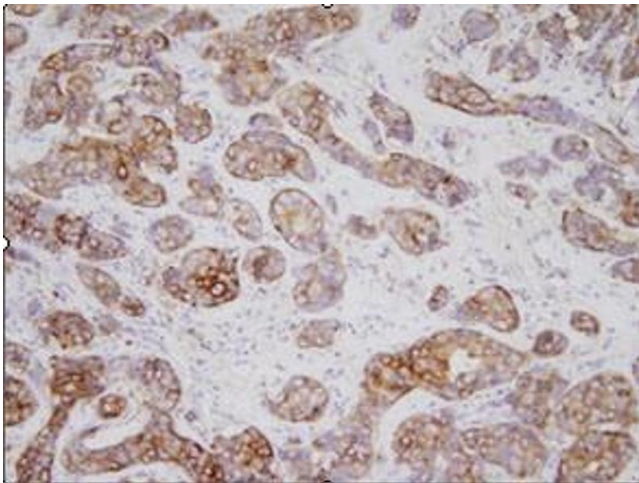
Precaution of Use: This product contains Sodium azide: a POISONOUS AND HAZARDOUS SUBSTANCE which should be handled by trained staff only.

Handling Advice: Avoid repeated freeze/thaw cycles

Storage: -20 °C

Storage Comment: Store at 4 °C for short term storage. Aliquot and store at -20 °C for long term storage.

Images



Immunohistochemistry

Image 1. Human gastric cancer tissues were immunohistochemically stained with anti-human TPD52L1 (1:200) for 1 hour at room temperature. Slides were then washed in PBS, and were immunohistochemically stained in avidin-biotin-peroxidase complex (ABC) system anti-rabbit labeled polymer for 30 min at RT. Enzyme detection was performed with DAB chromogen.