

Datasheet for ABIN934014
anti-SET7/9 antibody (AA 1-366)



[Go to Product page](#)

1 Image

Overview

Quantity:	100 µL
Target:	SET7/9
Binding Specificity:	AA 1-366
Reactivity:	Human
Host:	Mouse
Clonality:	Monoclonal
Conjugate:	This SET7/9 antibody is un-conjugated
Application:	ELISA, Western Blotting (WB)

Product Details

Immunogen:	SET 7/9 antibody was raised in mouse using recombinant human SET7/9 (1-366aa) purified from E. coli as the immunogen.
Clone:	S4E5
Isotype:	IgG2b kappa
Purification:	SET 7/9 antibody was purified by protein-G affinity chromatography

Target Details

Target:	SET7/9
Alternative Name:	SET 7/9 (SET7/9 Products)

Application Details

Application Notes: WB: 1:500-1:2000

Restrictions: For Research Use only

Handling

Format: Liquid

Concentration: Lot specific

Buffer: as a liquid PBS, pH 7.4, with 0.1 % NaN₃.

Preservative: Sodium azide

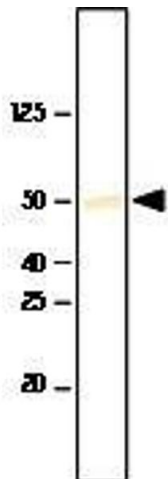
Precaution of Use: This product contains Sodium azide: a POISONOUS AND HAZARDOUS SUBSTANCE which should be handled by trained staff only.

Handling Advice: Avoid repeated freeze/thaw cycles

Storage: -20 °C

Storage Comment: Store at 4 °C for short term storage. Aliquot and store at -20 °C for long term storage.

Images



Western Blotting

Image 1. Recombinant SET7/9 was resolved by electrophoresis, transferred to PVDF membrane and probed with anti-SET7/9(1:1,000). Proteins were visualized using a goat anti-mouse secondary antibody conjugated to HRP and a DAP detection system. Arrow indicated SET7/9