

Datasheet for ABIN934015
anti-KIR2D antibody (AA 44-202)



[Go to Product page](#)

1 Image

Overview

Quantity:	100 µL
Target:	KIR2D
Binding Specificity:	AA 44-202
Reactivity:	Human
Host:	Mouse
Clonality:	Monoclonal
Conjugate:	This KIR2D antibody is un-conjugated
Application:	Western Blotting (WB), ELISA

Product Details

Immunogen:	KIR2D antibody was raised in mouse using recombinant human KIR2D (44-202aa) purified from E. coli as the immunogen.
Clone:	2H6
Isotype:	IgG2b kappa
Purification:	KIR2D antibody was purified by protein-G affinity chromatography

Target Details

Target:	KIR2D
Alternative Name:	KIR2D (KIR2D Products)

Application Details

Application Notes: WB: 1:500-1:1000

Restrictions: For Research Use only

Handling

Format: Liquid

Concentration: Lot specific

Buffer: as a liquid PBS, pH 7.4, with 0.1 % NaN₃.

Preservative: Sodium azide

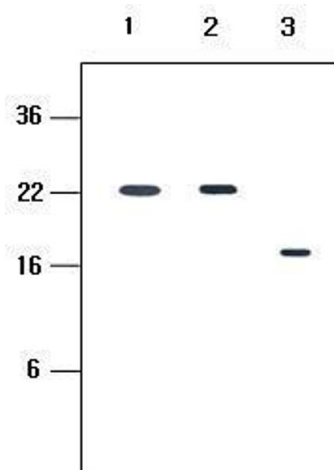
Precaution of Use: This product contains Sodium azide: a POISONOUS AND HAZARDOUS SUBSTANCE which should be handled by trained staff only.

Handling Advice: Avoid repeated freeze/thaw cycles

Storage: -20 °C

Storage Comment: Store at 4 °C for short term storage. Aliquot and store at -20 °C for long term storage.

Images



Western Blotting

Image 1. Human recombinant protein KIR2DL1, KIR2DL3 and KIR2DL4 (each 20ng per well) were resolved by SDS-PAGE, transferred to PVDF membrane and probed with anti-human KIR2D (1:500). Proteins were visualized using a goat anti-mouse secondary antibody conjugated to HRP and a ECL detection system * Lane 1 : Extracellular domain of KIR2DL1(23-223aa), Lane 2 : Extracellular domain of KIR2DL3(23-223aa), Lane 3 : Extracellular domain of KIR2DL4(44-202aa)