

Datasheet for ABIN934026
anti-WHSC1L1 antibody (AA 383-660)



[Go to Product page](#)

1 Image

Overview

Quantity:	100 µL
Target:	WHSC1L1
Binding Specificity:	AA 383-660
Reactivity:	Human
Host:	Mouse
Clonality:	Monoclonal
Conjugate:	This WHSC1L1 antibody is un-conjugated
Application:	Western Blotting (WB), ELISA

Product Details

Immunogen:	NSD3 antibody was raised in mouse using recombinant human NSD3 (383-660aa) purified from E. coli as the immunogen.
Clone:	2E9
Isotype:	IgG2b kappa
Purification:	NSD3 antibody was purified by protein-G affinity chromatography

Target Details

Target:	WHSC1L1
Alternative Name:	NSD3 (WHSC1L1 Products)

Application Details

Application Notes: WB: 1:100-1:1000, IHC: 1:50-1:100, ELISA: 1:10000

Restrictions: For Research Use only

Handling

Format: Liquid

Concentration: Lot specific

Buffer: as a liquid PBS, pH 7.4, with 0.1 % NaN₃.

Preservative: Sodium azide

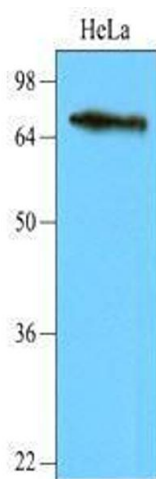
Precaution of Use: This product contains Sodium azide: a POISONOUS AND HAZARDOUS SUBSTANCE which should be handled by trained staff only.

Handling Advice: Avoid repeated freeze/thaw cycles

Storage: -20 °C

Storage Comment: Store at 4 °C for short term storage. Aliquot and store at -20 °C for long term storage.

Images



Western Blotting

Image 1. Cell lysates of HeLa (40 ug) were resolved by SDS-PAGE, transferred to nitrocellulose membrane and probed with anti-human NSD3 (1:2,000). Proteins were visualized using a goat anti-mouse secondary antibody conjugated to HRP and an ECL detection system.