

Datasheet for ABIN934035

anti-HSPH1 antibody (AA 1-858)[Go to Product page](#)**1** Image

Overview

Quantity:	100 µL
Target:	HSPH1
Binding Specificity:	AA 1-858
Reactivity:	Human
Host:	Mouse
Clonality:	Monoclonal
Conjugate:	This HSPH1 antibody is un-conjugated
Application:	Western Blotting (WB), ELISA

Product Details

Immunogen:	HSP105 alpha antibody was raised in mouse using recombinant human Hsp105 alpha (1-858aa) purified from E. coli as the immunogen.
Clone:	J1G12
Isotype:	IgG2b kappa
Purification:	HSP105 alpha antibody was purified by protein-G affinity chromatography

Target Details

Target:	HSPH1
Alternative Name:	HSP105 alpha (HSPH1 Products)

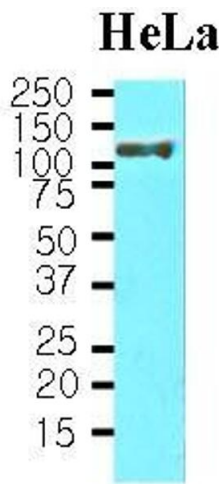
Application Details

Application Notes:	WB: 1:1,000-1:3,000
Restrictions:	For Research Use only

Handling

Format:	Liquid
Concentration:	Lot specific
Buffer:	as a liquid PBS, pH 7.4, with 0.1 % NaN3.
Preservative:	Sodium azide
Precaution of Use:	This product contains Sodium azide: a POISONOUS AND HAZARDOUS SUBSTANCE which should be handled by trained staff only.
Handling Advice:	Avoid repeated freeze/thaw cycles
Storage:	-20 °C
Storage Comment:	Store at 4 °C for short term storage. Aliquot and store at -20 °C for long term storage.

Images



Western Blotting

Image 1. Cell lysates of HeLa(30 ug) were resolved by SDS-PAGE, transferred to nitrocellulose membrane and probed with anti-human Hsp105 alpha (1:1,000). Proteins were visualized using a goat anti-mouse secondary antibody conjugated to HRP and an ECL detection system.