

Datasheet for ABIN934041
anti-UBE2L6 antibody (AA 1-152)



[Go to Product page](#)

2 Images

Overview

Quantity:	100 µL
Target:	UBE2L6
Binding Specificity:	AA 1-152
Reactivity:	Human
Host:	Mouse
Clonality:	Monoclonal
Conjugate:	This UBE2L6 antibody is un-conjugated
Application:	Western Blotting (WB), ELISA, Immunohistochemistry (IHC)

Product Details

Immunogen:	UBE2L6 antibody was raised in mouse using recombinant human UBE2L6 (1-152aa) purified from E. coli as the immunogen.
Clone:	K1H3
Isotype:	IgG2b kappa
Purification:	UBE2L6 antibody was purified by protein-G affinity chromatography

Target Details

Target:	UBE2L6
Alternative Name:	UBE2L6 (UBE2L6 Products)

Application Details

Application Notes: IHC: 1:50-1:100, WB: 1:1,000-1:3,000

Restrictions: For Research Use only

Handling

Format: Liquid

Concentration: Lot specific

Buffer: as a liquid PBS, pH 7.4, with 0.1 % NaN₃.

Preservative: Sodium azide

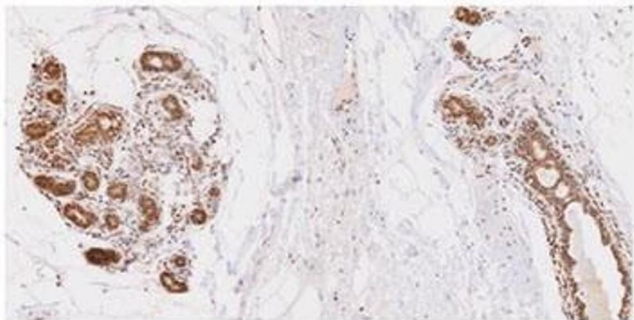
Precaution of Use: This product contains Sodium azide: a POISONOUS AND HAZARDOUS SUBSTANCE which should be handled by trained staff only.

Handling Advice: Avoid repeated freeze/thaw cycles

Storage: -20 °C

Storage Comment: Store at 4 °C for short term storage. Aliquot and store at -20 °C for long term storage.

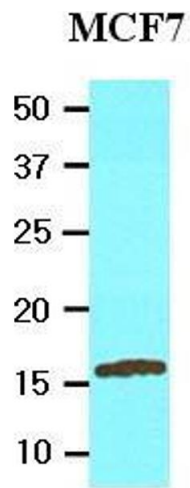
Images



Human breast lobule tissue

Immunohistochemistry

Image 1. Paraffin embedded sections of human breast lobule tissue were nitrocelluloseubated with anti-human UBE2L6 (1:50) for 2 hours at room temperature. Antigen retrieval was performed in 0.1M sodium citrate buffer and detected using Diaminobenzidine (DAB)



Western Blotting

Image 2. Cell lysates of MCF7 (20 ug) were resolved by SDS-PAGE, transferred to nitrocellulose membrane and probed with anti-human UBE2L6 (1:2000). Proteins were visualized using a goat anti-mouse secondary antibody conjugated to HRP and an ECL detection system.