

Datasheet for ABIN934043
anti-MAT2A antibody (AA 1-395)



[Go to Product page](#)

2 Images

Overview

| | |
|----------------------|----------------------------------------------------------|
| Quantity: | 100 µL |
| Target: | MAT2A |
| Binding Specificity: | AA 1-395 |
| Reactivity: | Human |
| Host: | Mouse |
| Clonality: | Monoclonal |
| Application: | Western Blotting (WB), ELISA, Immunohistochemistry (IHC) |

Product Details

| | |
|---------------|--------------------------------------------------------------------------------------------------------------------|
| Immunogen: | MAT2A antibody was raised in mouse using recombinant human MAT2A (1-395aa) purified from E. coli as the immunogen. |
| Clone: | AT3A2 |
| Isotype: | IgG2b kappa |
| Purification: | MAT2A antibody was purified by protein-G affinity chromatography |

Target Details

| | |
|-------------------|-------------------------------------------------------------------------------------------------------|
| Target: | MAT2A |
| Alternative Name: | MAT2A (MAT2A Products) |
| Pathways: | Ribonucleoside Biosynthetic Process , Methionine Biosynthetic Process |

Application Details

Application Notes: WB: 1:1000-2000

Restrictions: For Research Use only

Handling

Format: Liquid

Concentration: Lot specific

Buffer: as a liquid PBS, pH 7.4, with 0.1 % NaN₃.

Preservative: Sodium azide

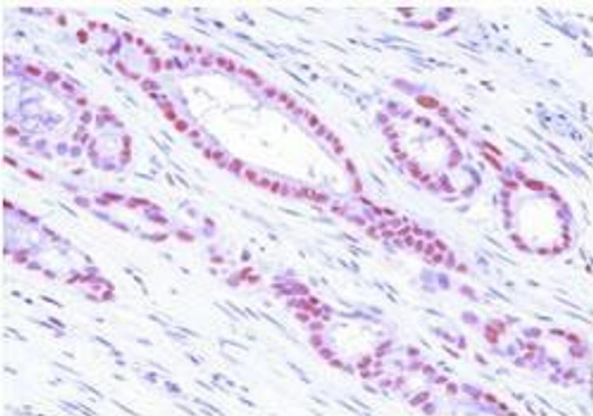
Precaution of Use: This product contains Sodium azide: a POISONOUS AND HAZARDOUS SUBSTANCE which should be handled by trained staff only.

Handling Advice: Avoid repeated freeze/thaw cycles

Storage: -20 °C

Storage Comment: Store at 4 °C for short term storage. Aliquot and store at -20 °C for long term storage.

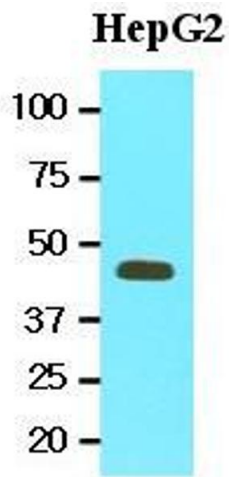
Images



Human colon cancer tissue

Immunohistochemistry

Image 1. Paraffin embedded sections of human colon cancer tissue were immunohistochemically stained with anti-human MAT2A (1:50) for 2 hours at room temperature. Antigen retrieval was performed in 0.1M sodium citrate buffer and detected using Diaminobenzidine (DAB)



Western Blotting

Image 2. Cell lysates of HepG2 (20 ug) were resolved by SDS-PAGE, transferred to nitrocellulose membrane and probed with anti-human MAT2A (1:1000). Proteins were visualized using a goat anti-mouse secondary antibody conjugated to HRP and an ECL detection system.